

## Product datasheet for **TA332727**

### UBE2C Rabbit Polyclonal Antibody

#### Product data:

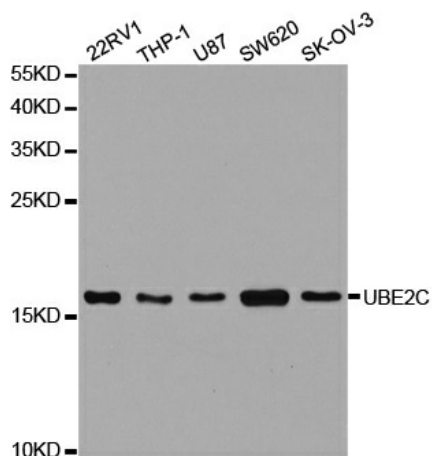
Product Type:	Primary Antibodies
Applications:	ICC/IF, IHC, IP, WB
Recommended Dilution:	WB 1:500 - 1:2000;IF 1:50- 1:200
Reactivity:	Human, Mouse, Rat
Host:	Rabbit
Isotype:	IgG
Clonality:	Polyclonal
Immunogen:	Recombinant protein of human UBE2C
Formulation:	Store at -20°C (regular) and -80°C (long term). Avoid freeze / thaw cycles. Buffer: PBS with 0.02% sodium azide, 50% glycerol, pH7.3.
Concentration:	lot specific
Purification:	Affinity purification
Conjugation:	Unconjugated
Storage:	Store at -20°C as received.
Stability:	Stable for 12 months from date of receipt.
Predicted Protein Size:	179
Gene Name:	ubiquitin conjugating enzyme E2 C
Database Link:	<a href="#">NP_861517</a> <a href="#">Entrez Gene 68612 MouseEntrez Gene 296368 RatEntrez Gene 11065 Human</a> <a href="#">O00762</a>

**Background:** The modification of proteins with ubiquitin is an important cellular mechanism for targeting abnormal or short-lived proteins for degradation. Ubiquitination involves at least three classes of enzymes: ubiquitin-activating enzymes, ubiquitin-conjugating enzymes, and ubiquitin-protein ligases. This gene encodes a member of the E2 ubiquitin-conjugating enzyme family. The encoded protein is required for the destruction of mitotic cyclins and for cell cycle progression, and may be involved in cancer progression. Multiple transcript variants encoding different isoforms have been found for this gene. Pseudogenes of this gene have been defined on chromosomes 4, 14, 15, 18, and 19.

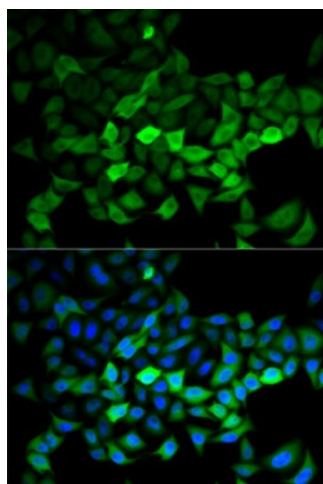


[View online »](#)

**Synonyms:** dj447F3.2; UBCH10  
**Protein Families:** Druggable Genome  
**Protein Pathways:** Ubiquitin mediated proteolysis

**Product images:**


Western blot analysis of extracts of various cell lines, using UBE2C antibody.



Immunofluorescence analysis of HeLa cell using UBE2C antibody. Blue: DAPI for nuclear staining.