

## Product datasheet for **TA332726S**

### IL27 Rabbit Polyclonal Antibody

#### Product data:

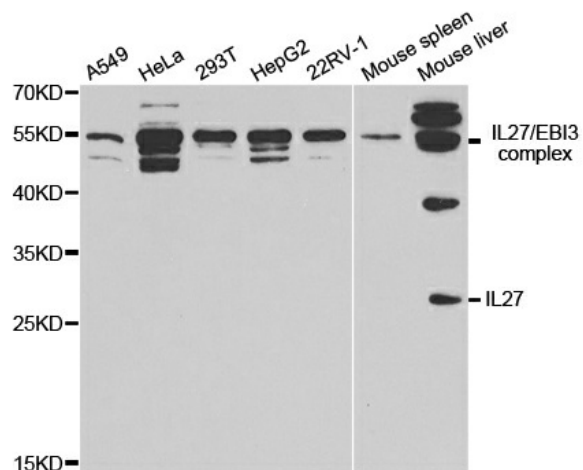
Product Type:	Primary Antibodies
Applications:	WB
Recommended Dilution:	WB 1:500 - 1:2000
Reactivity:	Human, Mouse
Host:	Rabbit
Isotype:	IgG
Clonality:	Polyclonal
Immunogen:	Recombinant protein of human IL27
Formulation:	Store at -20°C (regular) and -80°C (long term). Avoid freeze / thaw cycles. Buffer: PBS with 0.02% sodium azide, 50% glycerol, pH7.3.
Concentration:	lot specific
Purification:	Affinity purification
Conjugation:	Unconjugated
Storage:	Store at -20°C as received.
Stability:	Stable for 12 months from date of receipt.
Predicted Protein Size:	243
Gene Name:	interleukin 27
Database Link:	<a href="#">NP_663634</a> <a href="#">Entrez Gene 246779 Mouse</a> <a href="#">Entrez Gene 246778 Human</a> <a href="#">Q8NEV9</a>
Background:	The protein encoded by this gene is one of the subunits of a heterodimeric cytokine complex. This protein is related to interleukin 12A (IL12A). It interacts with Epstein-Barr virus induced gene 3 (EBI3), a protein similar to interleukin 12B (IL12B), and forms a complex that has been shown to drive rapid expansion of naive but not memory CD4(+) T cells. The complex is also found to synergize strongly with interleukin 12 to trigger interferon gamma (IFNG) production of naive CD4(+) T cells. The biological effects of this cytokine are mediated by the class I cytokine receptor (WSX1/TCRR).
Synonyms:	IL-27; IL-27A; IL27A; IL27p28; IL30; p28



[View online »](#)

Protein Families: Druggable Genome, Transmembrane

### Product images:



Western blot analysis of extracts of various cell lines, using IL27 antibody.