

## Product datasheet for **TA332722**

### SULT2A1 Rabbit Polyclonal Antibody

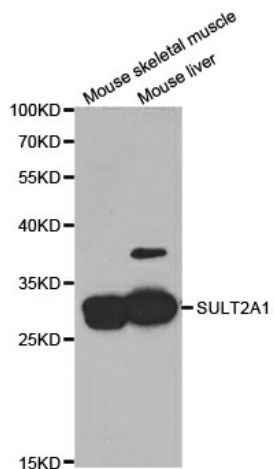
#### Product data:

Product Type:	Primary Antibodies
Applications:	WB
Recommended Dilution:	WB 1:500 - 1:2000
Reactivity:	Human, Mouse
Host:	Rabbit
Isotype:	IgG
Clonality:	Polyclonal
Immunogen:	Recombinant protein of human SULT2A1
Formulation:	Store at -20°C (regular) and -80°C (long term). Avoid freeze / thaw cycles. Buffer: PBS with 0.02% sodium azide, 50% glycerol, pH7.3.
Concentration:	lot specific
Purification:	Affinity purification
Conjugation:	Unconjugated
Storage:	Store at -20°C as received.
Stability:	Stable for 12 months from date of receipt.
Predicted Protein Size:	285
Gene Name:	sulfotransferase family 2A member 1
Database Link:	<a href="#">NP_003158</a> <a href="#">Entrez Gene 20859 Mouse</a> <a href="#">Entrez Gene 6822 Human</a> <a href="#">Q06520</a>
Background:	This gene encodes a member of the sulfotransferase family. Sulfotransferases aid in the metabolism of drugs and endogenous compounds by converting these substances into more hydrophilic water-soluble sulfate conjugates that can be easily excreted. This protein catalyzes the sulfation of steroids and bile acids in the liver and adrenal glands, and may have a role in the inherited adrenal androgen excess in women with polycystic ovary syndrome.
Synonyms:	DHEA-ST; DHEAS; HST; hSTa; ST2; ST2A1; ST2A3; STD



[View online »](#)

## Product images:



Western blot analysis of extracts of various cell lines, using SULT2A1 antibody.