

Product datasheet for **TA332721S**

SNRPE Rabbit Polyclonal Antibody

Product data:

Product Type:	Primary Antibodies
Applications:	ELISA, IHC, WB
Recommended Dilution:	WB, 1:500 - 1:2000 IHC-P, 1:50 - 1:200 ELISA, Recommended starting concentration is 1 µg/mL. Please optimize the concentration based on your specific assay requirements.
Reactivity:	Human, Mouse, Rat
Host:	Rabbit
Isotype:	IgG
Clonality:	Polyclonal
Formulation:	Store at -20°C (regular) and -80°C (long term). Avoid freeze / thaw cycles. Buffer: PBS with 0.02% sodium azide, 50% glycerol, pH7.3.
Concentration:	lot specific
Purification:	Affinity purification
Conjugation:	Unconjugated
Storage:	Store at -20°C. Avoid freeze / thaw cycles.
Stability:	Stable for 12 months from date of receipt.
Predicted Protein Size:	11kDa
Gene Name:	small nuclear ribonucleoprotein polypeptide E
Database Link:	NP_003085 Entrez Gene 20643 Mouse Entrez Gene 100360682 Rat Entrez Gene 6635 Human P62304
Background:	The protein encoded by this gene is a core component of U small nuclear ribonucleoproteins, which are key components of the pre-mRNA processing spliceosome. The encoded protein plays a role in the 3' end processing of histone transcripts. This protein is one of the targets in the autoimmune disease systemic lupus erythematosus, and mutations in this gene have been associated with hypotrichosis. Several pseudogenes of this gene have been identified.
Synonyms:	B-raf; HYPT11; Sm-E; SME

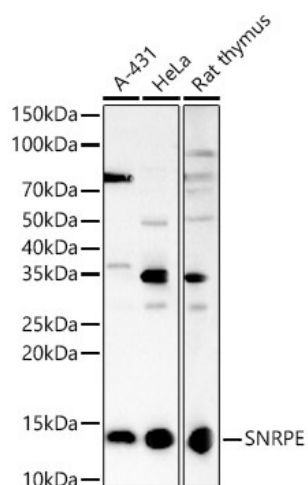


[View online »](#)

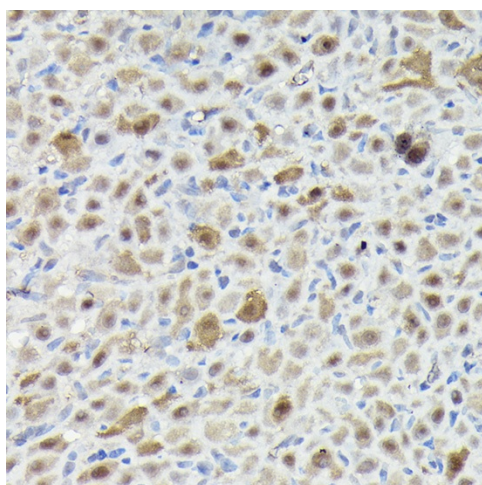
Protein Families: Stem cell - Pluripotency

Protein Pathways: Spliceosome

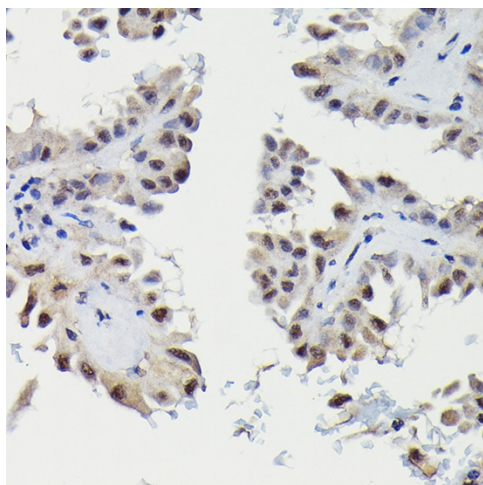
Product images:



Western blot analysis of various lysates



Immunohistochemistry analysis of paraffin-embedded Rat ovary using SNRPE Rabbit pAb ([TA332721]) at dilution of 1:50 (40x lens). High pressure antigen retrieval performed with 0.01M Citrate Bufferr (pH 6.0) prior to IHC staining.



Immunohistochemistry analysis of paraffin-embedded Human thyroid cancer using SNRPE Rabbit pAb ([TA332721]) at dilution of 1:50 (40x lens). High pressure antigen retrieval performed with 0.01M Citrate Bufferr (pH 6.0) prior to IHC staining.