

Product datasheet for TA332721

SNRPE Rabbit Polyclonal Antibody

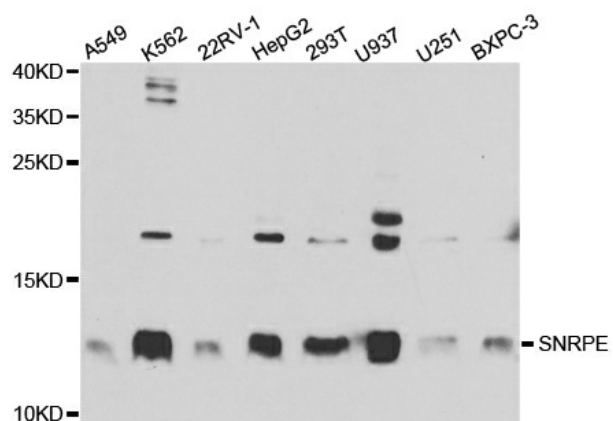
Product data:

Product Type:	Primary Antibodies
Applications:	IHC, WB
Recommended Dilution:	WB 1:500 - 1:2000
Reactivity:	Human, Mouse, Rat
Host:	Rabbit
Isotype:	IgG
Clonality:	Polyclonal
Immunogen:	Recombinant protein of human SNRPE
Formulation:	Store at -20°C (regular) and -80°C (long term). Avoid freeze / thaw cycles. Buffer: PBS with 0.02% sodium azide, 50% glycerol, pH7.3.
Concentration:	lot specific
Purification:	Affinity purification
Conjugation:	Unconjugated
Storage:	Store at -20°C as received.
Stability:	Stable for 12 months from date of receipt.
Predicted Protein Size:	92
Gene Name:	small nuclear ribonucleoprotein polypeptide E
Database Link:	NP_003085 Entrez Gene 20643 Mouse Entrez Gene 100360682 Rat Entrez Gene 6635 Human P62304
Synonyms:	B-raf; HYPT11; Sm-E; SME
Protein Families:	Stem cell - Pluripotency
Protein Pathways:	Spliceosome



[View online »](#)

Product images:



Western blot analysis of extracts of various cell lines, using SNRPE antibody.