

Product datasheet for **TA332720**

Semenogelin I (SEMG1) Rabbit Polyclonal Antibody

Product data:

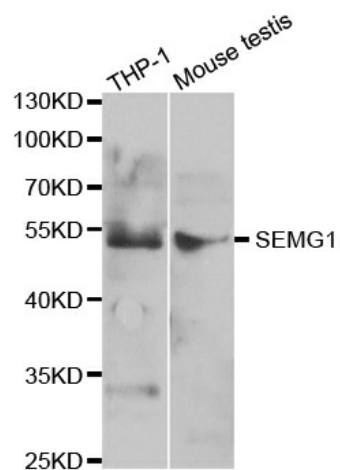
Product Type:	Primary Antibodies
Applications:	WB
Recommended Dilution:	WB 1:500 - 1:2000
Reactivity:	Human, Mouse, Rat
Host:	Rabbit
Isotype:	IgG
Clonality:	Polyclonal
Immunogen:	Recombinant protein of human SEMG1
Formulation:	Store at -20°C (regular) and -80°C (long term). Avoid freeze / thaw cycles. Buffer: PBS with 0.02% sodium azide, 50% glycerol, pH7.3.
Concentration:	lot specific
Purification:	Affinity purification
Conjugation:	Unconjugated
Storage:	Store at -20°C as received.
Stability:	Stable for 12 months from date of receipt.
Predicted Protein Size:	462
Gene Name:	semenogelin I
Database Link:	NP_937782 Entrez Gene 6406 Human P04279
Background:	The protein encoded by this gene is the predominant protein in semen. The encoded secreted protein is involved in the formation of a gel matrix that encases ejaculated spermatozoa. The prostate-specific antigen (PSA) protease processes this protein into smaller peptides, with each possibly having a separate function. The proteolysis process breaks down the gel matrix and allows the spermatozoa to move more freely.
Synonyms:	CT103; MGC14719; RATSVP1IA; secretion 2; semenogelin I; SEMG; seminal vesicle protein; seminal vesicle secretory protein 2; SGI; SVPIIA; Svs2; Svs2p2



[View online »](#)

Protein Families: Secreted Protein

Product images:



Western blot analysis of extracts of various cell lines, using SEMG1 antibody.