

Product datasheet for **TA332719S**

S100A11 Rabbit Polyclonal Antibody

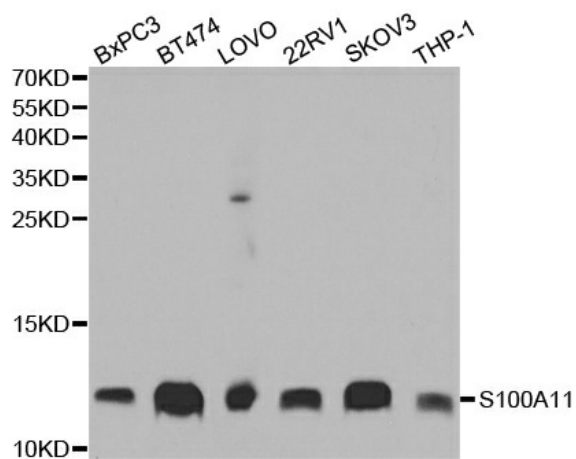
Product data:

| | |
|-------------------------|---|
| Product Type: | Primary Antibodies |
| Applications: | ICC/IF, IP, WB |
| Recommended Dilution: | WB 1:500 - 1:2000;IF 1:50- 1:200 |
| Reactivity: | Human |
| Host: | Rabbit |
| Isotype: | IgG |
| Clonality: | Polyclonal |
| Immunogen: | Recombinant protein of human S100A11 |
| Formulation: | Store at -20°C (regular) and -80°C (long term). Avoid freeze / thaw cycles. Buffer: PBS with 0.02% sodium azide, 50% glycerol, pH7.3. |
| Concentration: | lot specific |
| Purification: | Affinity purification |
| Conjugation: | Unconjugated |
| Storage: | Store at -20°C as received. |
| Stability: | Stable for 12 months from date of receipt. |
| Predicted Protein Size: | 105 |
| Gene Name: | S100 calcium binding protein A11 |
| Database Link: | NP_005611 Entrez Gene 6282 Human P31949 |
| Background: | The protein encoded by this gene is a member of the S100 family of proteins containing 2 EF-hand calcium-binding motifs. S100 proteins are localized in the cytoplasm and/or nucleus of a wide range of cells, and involved in the regulation of a number of cellular processes such as cell cycle progression and differentiation. S100 genes include at least 13 members which are located as a cluster on chromosome 1q21. This protein may function in motility, invasion, and tubulin polymerization. Chromosomal rearrangements and altered expression of this gene have been implicated in tumor metastasis. |
| Synonyms: | HEL-S-43; MLN70; S100C |

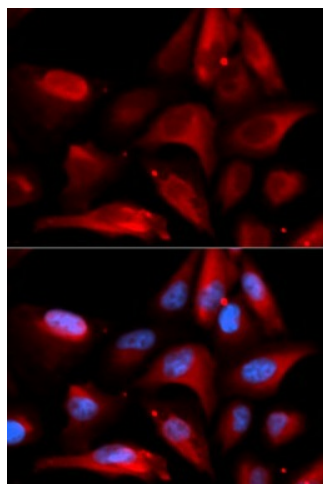


[View online »](#)

Product images:



Western blot analysis of extracts of various cell lines, using S100A11 antibody.



Immunofluorescence analysis of U2OS cell using S100A11 antibody. Blue: DAPI for nuclear staining.