

Product datasheet for **TA332715**

PRPF3 Rabbit Polyclonal Antibody

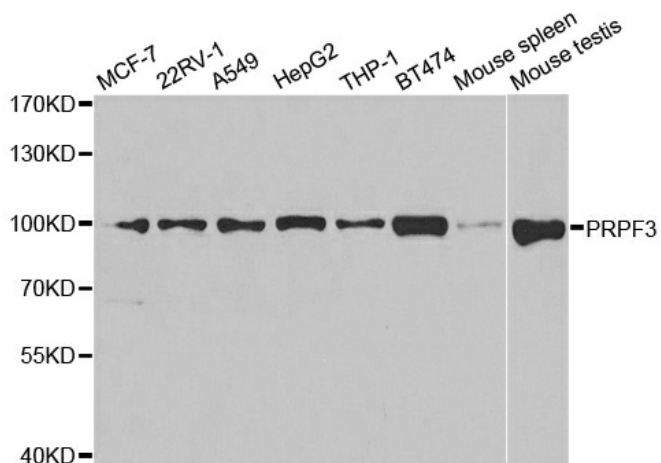
Product data:

Product Type:	Primary Antibodies
Applications:	ICC/IF, IHC, IP, WB
Recommended Dilution:	WB 1:500 - 1:2000;IF 1:50- 1:200
Reactivity:	Human, Mouse, Rat
Host:	Rabbit
Isotype:	IgG
Clonality:	Polyclonal
Immunogen:	Recombinant protein of human PRPF3
Formulation:	Store at -20°C (regular) and -80°C (long term). Avoid freeze / thaw cycles. Buffer: PBS with 0.02% sodium azide, 50% glycerol, pH7.3.
Concentration:	lot specific
Purification:	Affinity purification
Conjugation:	Unconjugated
Storage:	Store at -20°C as received.
Stability:	Stable for 12 months from date of receipt.
Predicted Protein Size:	683
Gene Name:	pre-mRNA processing factor 3
Database Link:	NP_004689 Entrez Gene 70767 MouseEntrez Gene 361995 RatEntrez Gene 9129 Human O43395
Background:	The removal of introns from nuclear pre-mRNAs occurs on complexes called spliceosomes, which are made up of 4 small nuclear ribonucleoprotein (snRNP) particles and an undefined number of transiently associated splicing factors. This gene product is one of several proteins that associate with U4 and U6 snRNPs. Mutations in this gene are associated with retinitis pigmentosa-18.
Synonyms:	HPRP3; HPRP3P; PRP3; Prp3p; RP18; SNRNP90
Protein Pathways:	Spliceosome

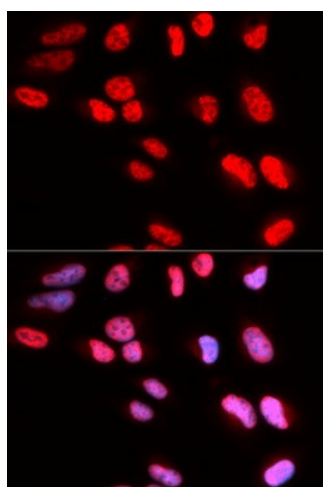


[View online »](#)

Product images:



Western blot analysis of extracts of various cell lines, using PRPF3 antibody.



Immunofluorescence analysis of U2OS cell using PRPF3 antibody. Blue: DAPI for nuclear staining.