

Product datasheet for **TA332714S**

Sigma1 receptor (SIGMAR1) Rabbit Polyclonal Antibody

Product data:

Product Type:	Primary Antibodies
Applications:	IHC, WB
Recommended Dilution:	WB 1:500 - 1:2000
Reactivity:	Human, Mouse, Rat
Host:	Rabbit
Isotype:	IgG
Clonality:	Polyclonal
Immunogen:	Recombinant protein of human SIGMAR1
Formulation:	Store at -20°C (regular) and -80°C (long term). Avoid freeze / thaw cycles. Buffer: PBS with 0.02% sodium azide, 50% glycerol, pH7.3.
Concentration:	lot specific
Purification:	Affinity purification
Conjugation:	Unconjugated
Storage:	Store at -20°C as received.
Stability:	Stable for 12 months from date of receipt.
Predicted Protein Size:	223
Gene Name:	sigma non-opioid intracellular receptor 1
Database Link:	NP_671513 Entrez Gene 18391 MouseEntrez Gene 29336 RatEntrez Gene 10280 Human Q99720
Background:	This gene encodes a receptor protein that interacts with a variety of psychotomimetic drugs, including cocaine and amphetamines. The receptor is believed to play an important role in the cellular functions of various tissues associated with the endocrine, immune, and nervous systems. As indicated by its previous name, opioid receptor sigma 1 (OPRS1), the product of this gene was erroneously thought to function as an opioid receptor; it is now thought to be a non-opioid receptor. Mutations in this gene has been associated with juvenile amyotrophic lateral sclerosis 16. Alternative splicing of this gene results in transcript variants encoding distinct isoforms.

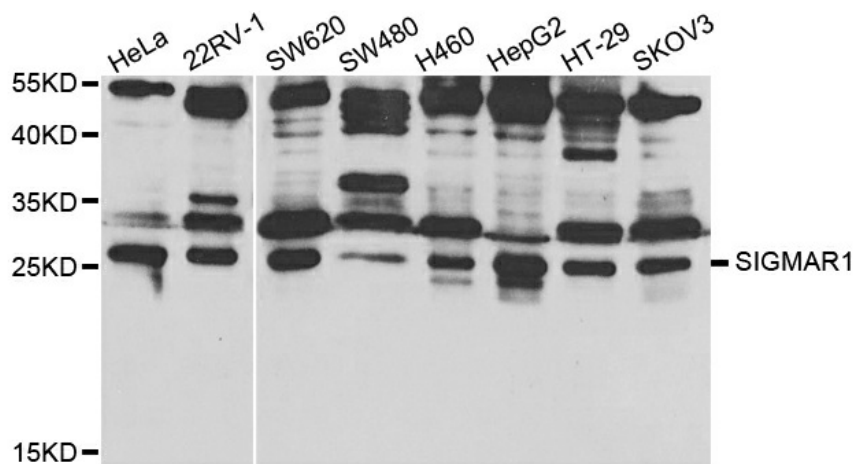


[View online »](#)

Synonyms: ALS16; DSMA2; hSigmaR1; OPRS1; SIG-1R; sigma1R; SR-BP; SR-BP1; SRBP

Protein Families: Druggable Genome, GPCR, Transmembrane

Product images:



Western blot analysis of extracts of various cell lines, using SIGMAR1 antibody.