

Product datasheet for **TA332708S**

Myoglobin (MB) Rabbit Polyclonal Antibody

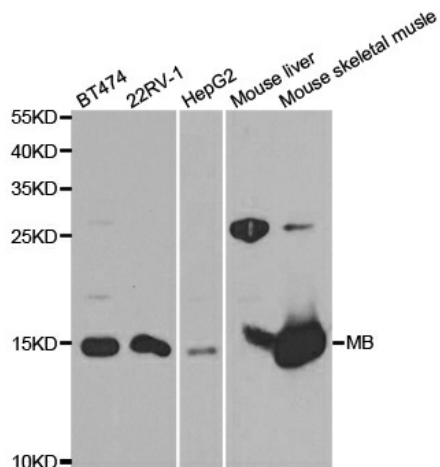
Product data:

Product Type:	Primary Antibodies
Applications:	ICC/IF, WB
Recommended Dilution:	WB 1:500 - 1:2000;IF 1:50- 1:200
Reactivity:	Human, Mouse, Rat
Host:	Rabbit
Isotype:	IgG
Clonality:	Polyclonal
Immunogen:	Recombinant protein of human MB
Formulation:	Store at -20°C (regular) and -80°C (long term). Avoid freeze / thaw cycles. Buffer: PBS with 0.02% sodium azide, 50% glycerol, pH7.3.
Concentration:	lot specific
Purification:	Affinity purification
Conjugation:	Unconjugated
Storage:	Store at -20°C as received.
Stability:	Stable for 12 months from date of receipt.
Predicted Protein Size:	154
Gene Name:	myoglobin
Database Link:	NP_976311 Entrez Gene 17189 Mouse Entrez Gene 59108 Rat Entrez Gene 4151 Human P02144
Background:	This gene encodes a member of the globin superfamily and is expressed in skeletal and cardiac muscles. The encoded protein is a haemoprotein contributing to intracellular oxygen storage and transcellular facilitated diffusion of oxygen. At least three alternatively spliced transcript variants encoding the same protein have been reported.
Synonyms:	myoglobin; PVALB

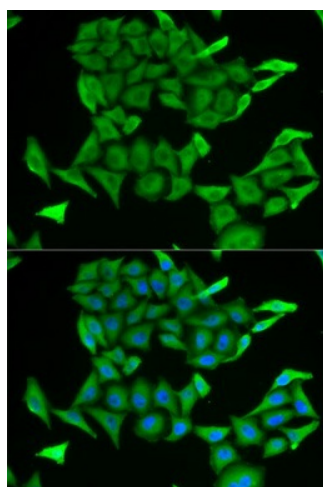


[View online »](#)

Product images:



Western blot analysis of extracts of various cell lines, using MB antibody.



Immunofluorescence analysis of HeLa cell using MB antibody. Blue: DAPI for nuclear staining.