

## Product datasheet for **TA332706**

### Lamin B Receptor (LBR) Rabbit Polyclonal Antibody

#### Product data:

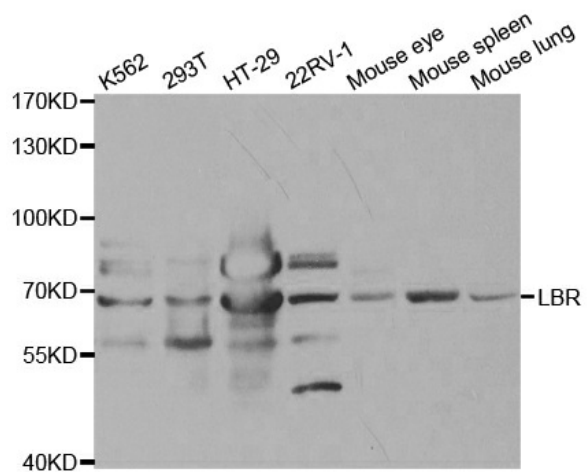
Product Type:	Primary Antibodies
Applications:	ICC/IF, WB
Recommended Dilution:	WB 1:500 - 1:2000
Reactivity:	Human, Mouse, Rat
Host:	Rabbit
Isotype:	IgG
Clonality:	Polyclonal
Immunogen:	Recombinant protein of human LBR
Formulation:	Store at -20°C (regular) and -80°C (long term). Avoid freeze / thaw cycles. Buffer: PBS with 0.02% sodium azide, 50% glycerol, pH7.3.
Concentration:	lot specific
Purification:	Affinity purification
Conjugation:	Unconjugated
Storage:	Store at -20°C as received.
Stability:	Stable for 12 months from date of receipt.
Predicted Protein Size:	615
Gene Name:	lamin B receptor
Database Link:	<a href="#">NP_919424</a> <a href="#">Entrez Gene 89789 Rat</a> <a href="#">Entrez Gene 98386 Mouse</a> <a href="#">Entrez Gene 3930 Human</a> <a href="#">Q14739</a>
Background:	The protein encoded by this gene belongs to the ERG4/ERG24 family. It localized in the nuclear envelope inner membrane and anchors the lamina and the heterochromatin to the membrane. It may mediate interaction between chromatin and lamin B. Mutations of this gene has been associated with autosomal recessive HEM/Greenberg skeletal dysplasia. Alternative splicing occurs at this locus and two transcript variants encoding the same protein have been identified.
Synonyms:	DHCR14B; LMN2R; PHA; TDRD18



[View online »](#)

Protein Families: Druggable Genome, Transmembrane

### Product images:



Western blot analysis of extracts of various cell lines, using LBR antibody.