

## Product datasheet for **TA332701**

### GDI1 Rabbit Polyclonal Antibody

#### Product data:

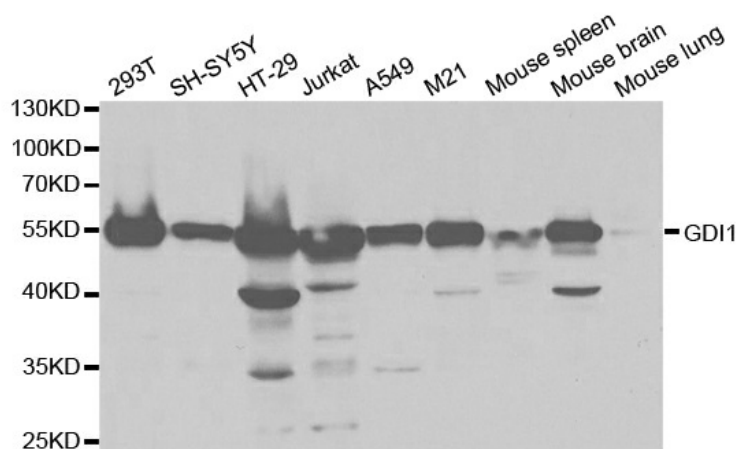
Product Type:	Primary Antibodies
Applications:	IF, IHC, WB
Recommended Dilution:	WB 1:500 - 1:2000;IHC 1:50- 1:200
Reactivity:	Human, Mouse, Rat
Host:	Rabbit
Isotype:	IgG
Clonality:	Polyclonal
Immunogen:	Recombinant protein of human GDI1
Formulation:	Store at -20°C (regular) and -80°C (long term). Avoid freeze / thaw cycles. Buffer: PBS with 0.02% sodium azide, 50% glycerol, pH7.3.
Concentration:	lot specific
Purification:	Affinity purification
Conjugation:	Unconjugated
Storage:	Store at -20°C as received.
Stability:	Stable for 12 months from date of receipt.
Predicted Protein Size:	447
Gene Name:	GDP dissociation inhibitor 1
Database Link:	<a href="#">NP_001484</a> <a href="#">Entrez Gene 14567 MouseEntrez Gene 25183 RatEntrez Gene 2664 Human P31150</a>
Background:	GDP dissociation inhibitors are proteins that regulate the GDP-GTP exchange reaction of members of the rab family, small GTP-binding proteins of the ras superfamily, that are involved in vesicular trafficking of molecules between cellular organelles. GDIs slow the rate of dissociation of GDP from rab proteins and release GDP from membrane-bound rabs. GDI1 is expressed primarily in neural and sensory tissues. Mutations in GDI1 have been linked to X-linked nonspecific mental retardation.
Synonyms:	1A; GDIL; MRX41; MRX48; OPHN2; RABGD1A; RABGDIA; XAP-4



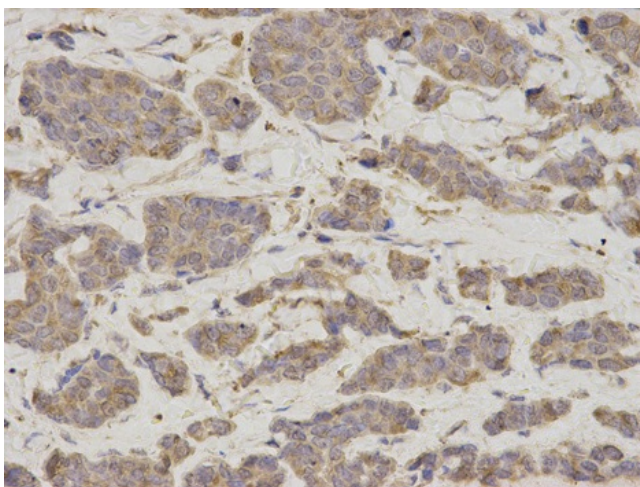
[View online »](#)

Protein Families: Druggable Genome

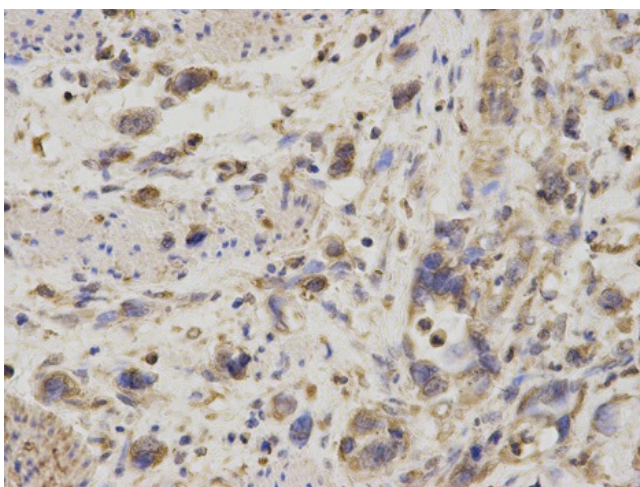
**Product images:**



Western blot analysis of extracts of various cell lines, using GDI1 antibody.



Immunohistochemical of paraffin-embedded human breast cancer using GDI1 antibody at dilution of 1:200 (400x lens).



Immunohistochemical of paraffin-embedded human stomach cancer using GDI1 antibody at dilution of 1:200 (400x lens).