

Product datasheet for **TA332693**

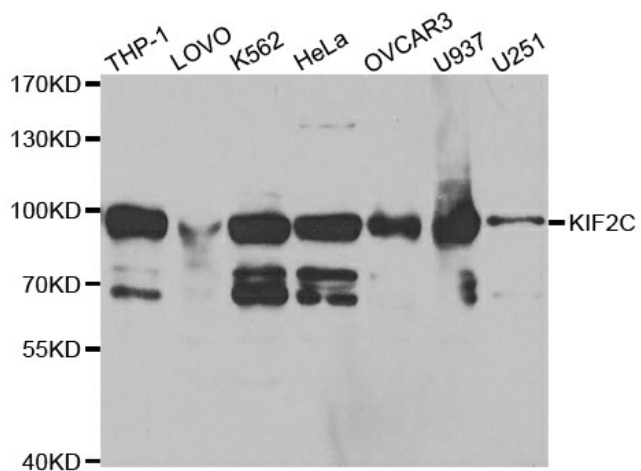
MCAK (KIF2C) Rabbit Polyclonal Antibody

Product data:

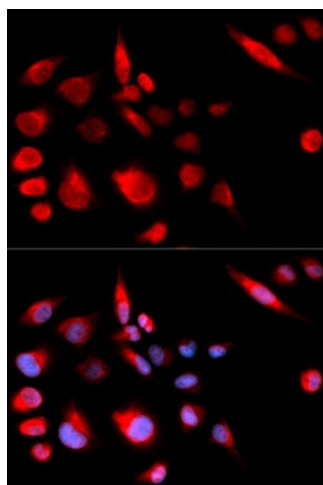
Product Type:	Primary Antibodies
Applications:	ICC/IF, IHC, WB
Recommended Dilution:	WB 1:500 - 1:2000;IF 1:50- 1:200
Reactivity:	Human, Mouse, Rat
Host:	Rabbit
Isotype:	IgG
Clonality:	Polyclonal
Immunogen:	Recombinant protein of human KIF2C
Formulation:	Store at -20°C (regular) and -80°C (long term). Avoid freeze / thaw cycles. Buffer: PBS with 0.02% sodium azide, 50% glycerol, pH7.3.
Concentration:	lot specific
Purification:	Affinity purification
Conjugation:	Unconjugated
Storage:	Store at -20°C as received.
Stability:	Stable for 12 months from date of receipt.
Predicted Protein Size:	725
Gene Name:	kinesin family member 2C
Database Link:	NP_006836 Entrez Gene 73804 Mouse Entrez Gene 171529 Rat Entrez Gene 11004 Human Q99661
Background:	The protein encoded by this gene is a member of kinesin-like protein family. Proteins of this family are microtubule-dependent molecular motors that transport organelles within cells and move chromosomes during cell division. This protein is important for anaphase chromosome segregation and may be required to coordinate the onset of sister centromere separation.
Synonyms:	CT139; KNSL6; MCAK
Protein Families:	Druggable Genome



[View online »](#)

Product images:

Western blot analysis of extracts of various cell lines, using KIF2C antibody.



Immunofluorescence analysis of U2OS cell using KIF2C antibody. Blue: DAPI for nuclear staining.