

Product datasheet for **TA332675**

MPG Rabbit Polyclonal Antibody

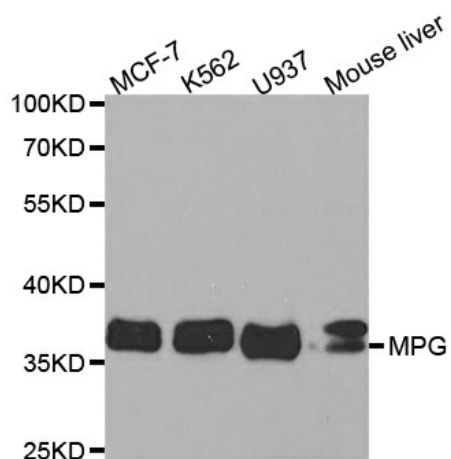
Product data:

Product Type:	Primary Antibodies
Applications:	ICC/IF, WB
Recommended Dilution:	WB 1:500 - 1:2000;IF 1:50- 1:100
Reactivity:	Human, Mouse
Host:	Rabbit
Isotype:	IgG
Clonality:	Polyclonal
Immunogen:	Recombinant protein of human MPG
Formulation:	Store at -20°C (regular) and -80°C (long term). Avoid freeze / thaw cycles. Buffer: PBS with 0.02% sodium azide, 50% glycerol, pH7.3.
Concentration:	lot specific
Purification:	Affinity purification
Conjugation:	Unconjugated
Storage:	Store at -20°C as received.
Stability:	Stable for 12 months from date of receipt.
Gene Name:	N-methylpurine DNA glycosylase
Database Link:	NP_001015054 Entrez Gene 268395 Mouse Entrez Gene 4350 Human P29372
Synonyms:	AAG; ADPG; anpg; APNG; CRA36.1; MDG; Mid1; PIG11; PIG16
Protein Families:	Druggable Genome, Transmembrane
Protein Pathways:	Base excision repair

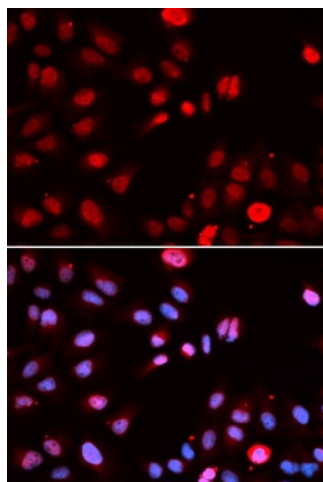


[View online »](#)

Product images:



Western blot analysis of extracts of various cell lines, using MPG antibody.



Immunofluorescence analysis of U2OS cell using MPG antibody. Blue: DAPI for nuclear staining.