

## Product datasheet for **TA332673**

### HUS1 Rabbit Polyclonal Antibody

#### Product data:

Product Type:	Primary Antibodies
Applications:	ICC/IF, IP, WB
Recommended Dilution:	WB 1:500 - 1:2000;IF 1:50- 1:200
Reactivity:	Human, Mouse
Host:	Rabbit
Isotype:	IgG
Clonality:	Polyclonal
Immunogen:	Recombinant protein of human HUS1
Formulation:	Store at -20°C (regular) and -80°C (long term). Avoid freeze / thaw cycles. Buffer: PBS with 0.02% sodium azide, 50% glycerol, pH7.3.
Concentration:	lot specific
Purification:	Affinity purification
Conjugation:	Unconjugated
Storage:	Store at -20°C as received.
Stability:	Stable for 12 months from date of receipt.
Predicted Protein Size:	280
Gene Name:	HUS1 checkpoint clamp component
Database Link:	<a href="#">NP_004498</a> <a href="#">Entrez Gene 15574 Mouse</a> <a href="#">Entrez Gene 3364 Human</a> <a href="#">O60921</a>



[View online »](#)

**Background:**

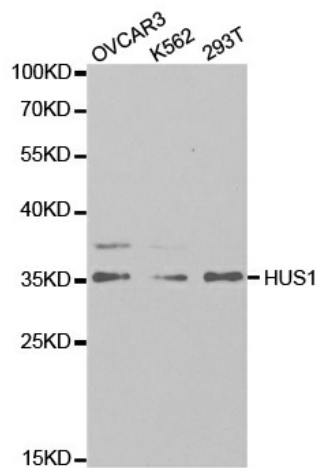
The protein encoded by this gene is a component of an evolutionarily conserved, genotoxin-activated checkpoint complex that is involved in the cell cycle arrest in response to DNA damage. This protein forms a heterotrimeric complex with checkpoint proteins RAD9 and RAD1. In response to DNA damage, the trimeric complex interacts with another protein complex consisting of checkpoint protein RAD17 and four small subunits of the replication factor C (RFC), which loads the combined complex onto the chromatin. The DNA damage induced chromatin binding has been shown to depend on the activation of the checkpoint kinase ATM, and is thought to be an early checkpoint signaling event. Alternative splicing results in multiple transcript variants.

**Synonyms:**

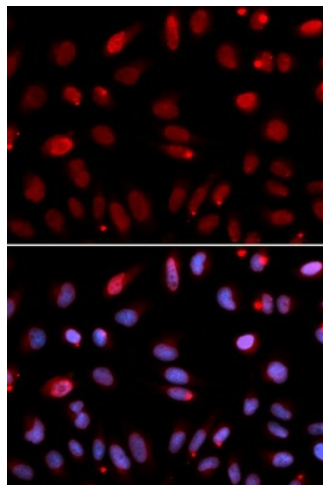
hHUS1

**Protein Families:**

Druggable Genome

**Product images:**


Western blot analysis of extracts of various cell lines, using HUS1 antibody.



Immunofluorescence analysis of U2OS cell using HUS1 antibody. Blue: DAPI for nuclear staining.