

## Product datasheet for **TA332672**

### FBP1 Rabbit Polyclonal Antibody

#### Product data:

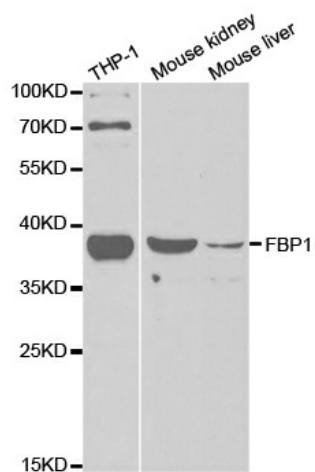
Product Type:	Primary Antibodies
Applications:	ICC/IF, WB
Recommended Dilution:	WB 1:500 - 1:2000;IF 1:50- 1:200
Reactivity:	Human, Mouse, Rat
Host:	Rabbit
Isotype:	IgG
Clonality:	Polyclonal
Immunogen:	Recombinant protein of human FBP1
Formulation:	Store at -20°C (regular) and -80°C (long term). Avoid freeze / thaw cycles. Buffer: PBS with 0.02% sodium azide, 50% glycerol, pH7.3.
Concentration:	lot specific
Purification:	Affinity purification
Conjugation:	Unconjugated
Storage:	Store at -20°C as received.
Stability:	Stable for 12 months from date of receipt.
Predicted Protein Size:	338
Gene Name:	fructose-bisphosphatase 1
Database Link:	<a href="#">NP_000498</a> <a href="#">Entrez Gene 14121 MouseEntrez Gene 24362 RatEntrez Gene 2203 Human P09467</a>
Background:	Fructose-1,6-bisphosphatase 1, a gluconeogenesis regulatory enzyme, catalyzes the hydrolysis of fructose 1,6-bisphosphate to fructose 6-phosphate and inorganic phosphate. Fructose-1,6-diphosphatase deficiency is associated with hypoglycemia and metabolic acidosis.
Synonyms:	FBP
Protein Families:	Druggable Genome, Stem cell - Pluripotency



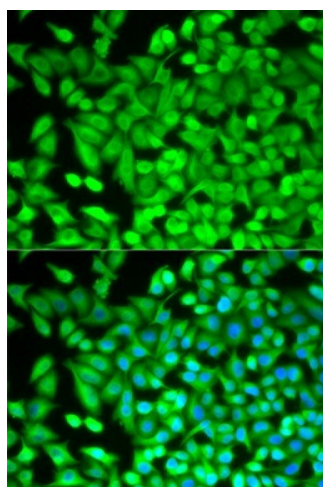
[View online »](#)

**Protein Pathways:** Fructose and mannose metabolism, Glycolysis / Gluconeogenesis, Insulin signaling pathway, Metabolic pathways, Pentose phosphate pathway

**Product images:**



Western blot analysis of extracts of various cell lines, using FBP1 antibody.



Immunofluorescence analysis of MCF-7 cell using FBP1 antibody. Blue: DAPI for nuclear staining.