

Product datasheet for **TA332671**

EIF4B Rabbit Polyclonal Antibody

Product data:

Product Type:	Primary Antibodies
Applications:	IF, IHC, WB
Recommended Dilution:	WB 1:500 - 1:2000;IHC 1:50- 1:200
Reactivity:	Human, Mouse, Rat
Host:	Rabbit
Isotype:	IgG
Clonality:	Polyclonal
Immunogen:	Recombinant protein of human EIF4B
Formulation:	Store at -20°C (regular) and -80°C (long term). Avoid freeze / thaw cycles. Buffer: PBS with 0.02% sodium azide, 50% glycerol, pH7.3.
Concentration:	lot specific
Purification:	Affinity purification
Conjugation:	Unconjugated
Storage:	Store at -20°C as received.
Stability:	Stable for 12 months from date of receipt.
Predicted Protein Size:	611
Gene Name:	eukaryotic translation initiation factor 4B
Database Link:	NP_001408 Entrez Gene 75705 Mouse Entrez Gene 300253 Rat Entrez Gene 1975 Human P23588



[View online »](#)

Background:

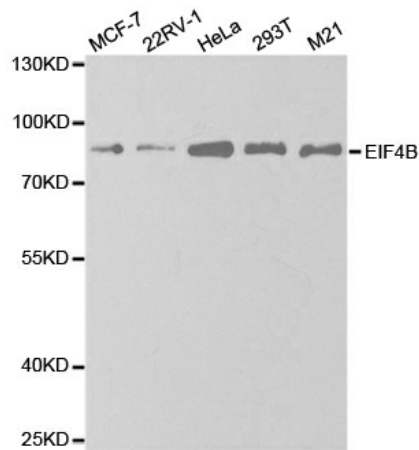
Eukaryotic initiation factor 4B (eIF4B) is thought to assist the eIF4F complex in translation initiation. In plants, eIF4B is known to interact with the poly-(A) binding protein, increasing its poly-(A) binding activity (1). Heat shock and serum starvation cause dephosphorylation of eIF4B at multiple sites with kinetics similar to those of the corresponding inhibition of translation, while phosphorylation of eIF4B following insulin treatment correlates well with an observed increase in translation (2-5). Multiple kinases, including p70 S6 kinase, can phosphorylate eIF4B in vitro, and at least one serum-inducible eIF4B phosphorylation site is sensitive to rapamycin and LY294002 (6). Recently, Ser406 was identified as a novel phosphorylation site regulated by mitogens (7), and the phosphorylation of this site is dependent on MEK and mTOR activity (7). This phosphorylation is shown to be essential for the translational activity of eIF4B (7).

Synonyms:

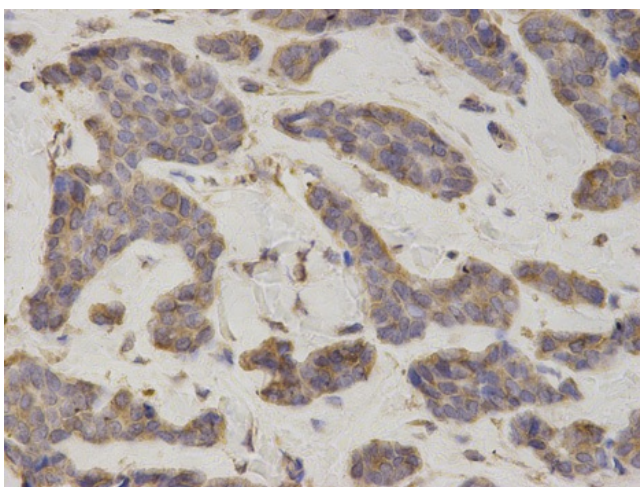
EIF-4B; PRO1843

Protein Pathways:

mTOR signaling pathway

Product images:

Western blot analysis of extracts of various cell lines, using EIF4B antibody.



Immunohistochemistry of paraffin-embedded human breast cancer using EIF4B antibody at dilution of 1:200 (400x lens).