

## Product datasheet for **TA332668**

### Cytochrome b5 (CYB5A) Rabbit Polyclonal Antibody

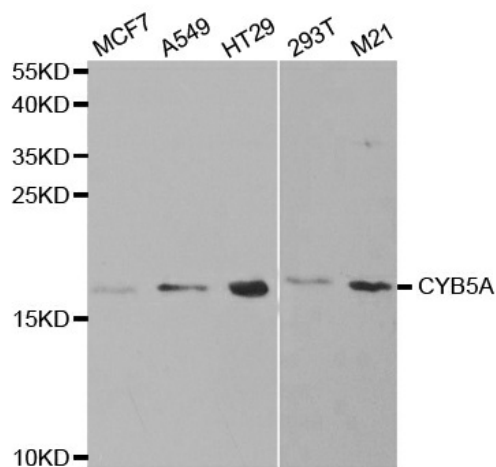
#### Product data:

Product Type:	Primary Antibodies
Applications:	ICC/IF, IHC, WB
Recommended Dilution:	WB 1:500 - 1:2000
Reactivity:	Human, Mouse, Rat
Host:	Rabbit
Isotype:	IgG
Clonality:	Polyclonal
Immunogen:	Recombinant protein of human CYB5A
Formulation:	Store at -20°C (regular) and -80°C (long term). Avoid freeze / thaw cycles. Buffer: PBS with 0.02% sodium azide, 50% glycerol, pH7.3.
Concentration:	lot specific
Purification:	Affinity purification
Conjugation:	Unconjugated
Storage:	Store at -20°C as received.
Stability:	Stable for 12 months from date of receipt.
Predicted Protein Size:	134
Gene Name:	cytochrome b5 type A
Database Link:	<a href="#">NP_683725</a> <a href="#">Entrez Gene 64001 Rat</a> <a href="#">Entrez Gene 109672 Mouse</a> <a href="#">Entrez Gene 1528 Human</a> <a href="#">P00167</a>
Background:	The protein encoded by this gene is a membrane-bound cytochrome that reduces ferric hemoglobin (methemoglobin) to ferrous hemoglobin, which is required for stearyl-CoA-desaturase activity. Defects in this gene are a cause of type IV hereditary methemoglobinemia. Three transcript variants encoding different isoforms have been found for this gene.
Synonyms:	CYB5; MCB5
Protein Families:	Transmembrane



[View online »](#)

## Product images:



Western blot analysis of extracts of various cell lines, using CYB5A antibody.