

## Product datasheet for **TA332666**

### Properdin (CFP) Rabbit Polyclonal Antibody

#### Product data:

Product Type:	Primary Antibodies
Applications:	ICC/IF, IHC, WB
Recommended Dilution:	WB 1:500 - 1:2000;IF 1:50- 1:200
Reactivity:	Human, Mouse, Rat
Host:	Rabbit
Isotype:	IgG
Clonality:	Polyclonal
Immunogen:	Recombinant protein of human CFP
Formulation:	PBS with 0.05% proclin300,50% glycerol,pH7.3.
Concentration:	lot specific
Purification:	Affinity purification
Conjugation:	Unconjugated
Storage:	Store at -20°C as received.
Stability:	Stable for 12 months from date of receipt.
Predicted Protein Size:	469
Gene Name:	complement factor properdin
Database Link:	<a href="#">NP_002612</a> <a href="#">Entrez Gene 18636 MouseEntrez Gene 299314 RatEntrez Gene 5199 Human P27918</a>

**Background:** This gene encodes a plasma glycoprotein that positively regulates the alternative complement pathway of the innate immune system. This protein binds to many microbial surfaces and apoptotic cells and stabilizes the C3- and C5-convertase enzyme complexes in a feedback loop that ultimately leads to formation of the membrane attack complex and lysis of the target cell. Mutations in this gene result in two forms of properdin deficiency, which results in high susceptibility to meningococcal infections. Multiple alternatively spliced variants, encoding the same protein, have been identified.

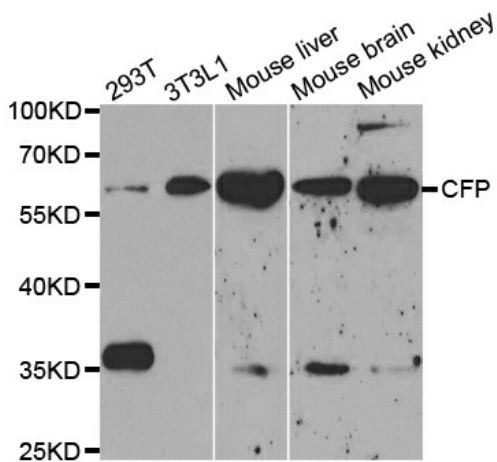
**Synonyms:** BFD; PFC; PFD; PROPERDIN



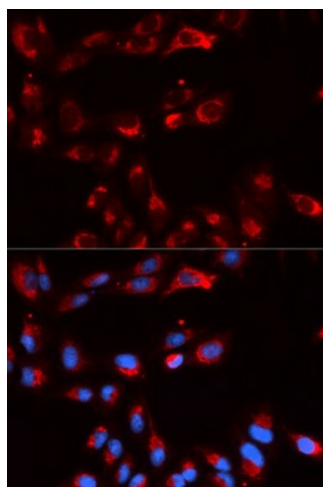
[View online »](#)

Protein Families: Secreted Protein

**Product images:**



Western blot analysis of extracts of various cell lines, using CFP antibody.



Immunofluorescence analysis of U20S cell using CFP antibody. Blue: DAPI for nuclear staining.