

Product datasheet for **TA332663S**

alpha Adaptin (AP2A2) Rabbit Polyclonal Antibody

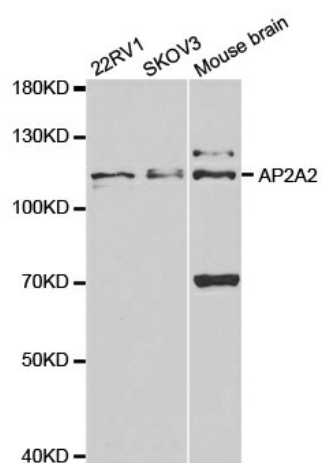
Product data:

Product Type:	Primary Antibodies
Applications:	ICC/IF, WB
Recommended Dilution:	WB 1:500 - 1:2000
Reactivity:	Human, Mouse, Rat
Host:	Rabbit
Isotype:	IgG
Clonality:	Polyclonal
Immunogen:	Recombinant protein of human AP2A2
Formulation:	Store at -20°C (regular) and -80°C (long term). Avoid freeze / thaw cycles. Buffer: PBS with 0.02% sodium azide, 50% glycerol, pH7.3.
Concentration:	lot specific
Purification:	Affinity purification
Conjugation:	Unconjugated
Storage:	Store at -20°C as received.
Stability:	Stable for 12 months from date of receipt.
Predicted Protein Size:	939
Gene Name:	adaptor related protein complex 2 alpha 2 subunit
Database Link:	NP_036437 Entrez Gene 11772 MouseEntrez Gene 81637 RatEntrez Gene 161 Human O94973
Background:	Adaptins are components of the adaptor complexes which link clathrin to receptors in coated vesicles. Clathrin-associated protein complexes are believed to interact with the cytoplasmic tails of membrane proteins, leading to their selection and concentration. Alpha adaptin is a subunit of the plasma membrane adaptor. It binds polyphosphoinositides.
Synonyms:	ADTAB; CLAPA2; HIP-9; HIP9; HYPJ
Protein Pathways:	Endocytosis, Huntington's disease



[View online »](#)

Product images:



Western blot analysis of extracts of various cell lines, using AP2A2 antibody.