

## Product datasheet for **TA332663**

### alpha Adaptin (AP2A2) Rabbit Polyclonal Antibody

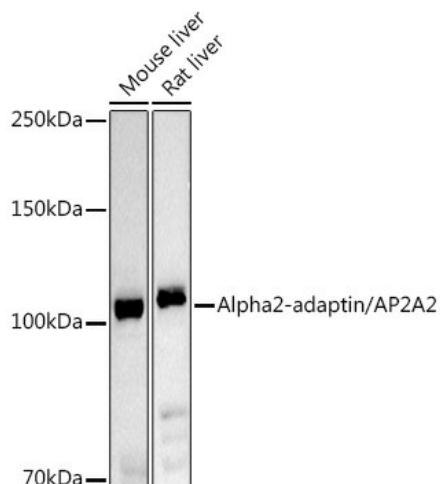
#### Product data:

Product Type:	Primary Antibodies
Applications:	ELISA, ICC/IF, WB
Recommended Dilution:	WB,1:500 - 1:1000 IF/ICC,1:50 - 1:200 ELISA,Recommended starting concentration is 1 µg/mL. Please optimize the concentration based on your specific assay requirements.
Reactivity:	Human, Mouse, Rat
Host:	Rabbit
Isotype:	IgG
Clonality:	Polyclonal
Formulation:	Buffer: PBS with 0.05% proclin300,50% glycerol,pH7.3.
Concentration:	lot specific
Purification:	Affinity purification
Conjugation:	Unconjugated
Storage:	Store at -20°C. Avoid freeze / thaw cycles.
Stability:	Stable for 12 months from date of receipt.
Predicted Protein Size:	104kDa
Gene Name:	adaptor related protein complex 2 alpha 2 subunit
Database Link:	<a href="#">NP_036437</a> <a href="#">Entrez Gene 11772 MouseEntrez Gene 81637 RatEntrez Gene 161 Human O94973</a>
Background:	The protein encoded by this gene is a subunit of the AP-2 adaptor protein complex, which is involved in linking lipid and protein membrane components with the clathrin lattice. This interaction supports the formation of clathrin-coated vesicles, and the encoded subunit aids in the process by binding polyphosphoinositide-containing lipids in the cell membrane.
Synonyms:	ADTAB; CLAPA2; HIP-9; HIP9; HYPJ
Protein Pathways:	Endocytosis, Huntington's disease



[View online »](#)

## Product images:



Western blot analysis of various lysates using Alpha2-adaptin/AP2A2 Rabbit pAb (TA332663) at 1:1000 dilution.

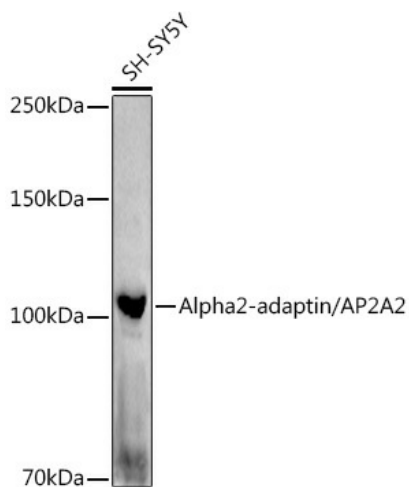
Secondary antibody: HRP-conjugated Goat anti-Rabbit IgG (H+L) (AS014) at 1:10000 dilution.

Lysates/proteins: 25µg per lane.

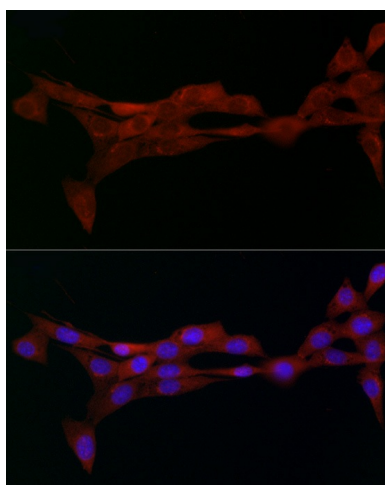
Blocking buffer: 3% nonfat dry milk in TBST.

Detection: ECL Basic Kit (RM00020).

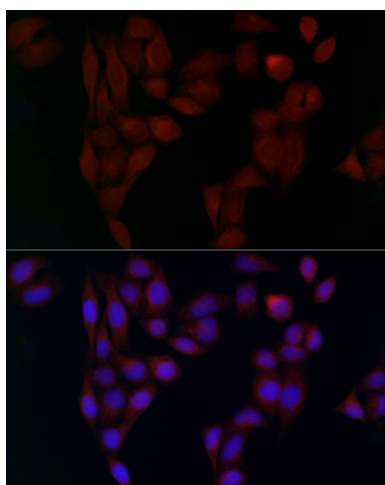
Exposure time: 30s.



Western blot analysis of lysates from SH-SY5Y cells



Immunofluorescence analysis of NIH/3T3 cells using Alpha2-adaptin/AP2A2 Rabbit pAb (TA332663) at dilution of 1:50 (40x lens). Secondary antibody: Cy3-conjugated Goat anti-Rabbit IgG (H+L) (AS007) at 1:500 dilution. Blue: DAPI for nuclear staining.



Immunofluorescence analysis of HeLa cells using Alpha2-adaptin/AP2A2 Rabbit pAb (TA332663) at dilution of 1:50 (40x lens). Secondary antibody: Cy3-conjugated Goat anti-Rabbit IgG (H+L) (AS007) at 1:500 dilution. Blue: DAPI for nuclear staining.