

## Product datasheet for **TA332661**

### Amphiphysin (AMPH) Rabbit Polyclonal Antibody

#### Product data:

Product Type:	Primary Antibodies
Applications:	ICC/IF, WB
Recommended Dilution:	WB 1:500 - 1:2000
Reactivity:	Human, Mouse, Rat
Host:	Rabbit
Isotype:	IgG
Clonality:	Polyclonal
Immunogen:	Recombinant protein of human AMPH
Formulation:	Store at -20°C (regular) and -80°C (long term). Avoid freeze / thaw cycles. Buffer: PBS with 0.02% sodium azide, 50% glycerol, pH7.3.
Concentration:	lot specific
Purification:	Affinity purification
Conjugation:	Unconjugated
Storage:	Store at -20°C as received.
Stability:	Stable for 12 months from date of receipt.
Predicted Protein Size:	695
Gene Name:	amphiphysin
Database Link:	<a href="#">NP_001626</a> <a href="#">Entrez Gene 60668 RatEntrez Gene 218038 MouseEntrez Gene 273 Human P49418</a>
Background:	This gene encodes a protein associated with the cytoplasmic surface of synaptic vesicles. A subset of patients with stiff-man syndrome who were also affected by breast cancer are positive for autoantibodies against this protein. Alternate splicing of this gene results in two transcript variants encoding different isoforms. Additional splice variants have been described, but their full length sequences have not been determined. A pseudogene of this gene is found on chromosome 11.
Synonyms:	AMPH1

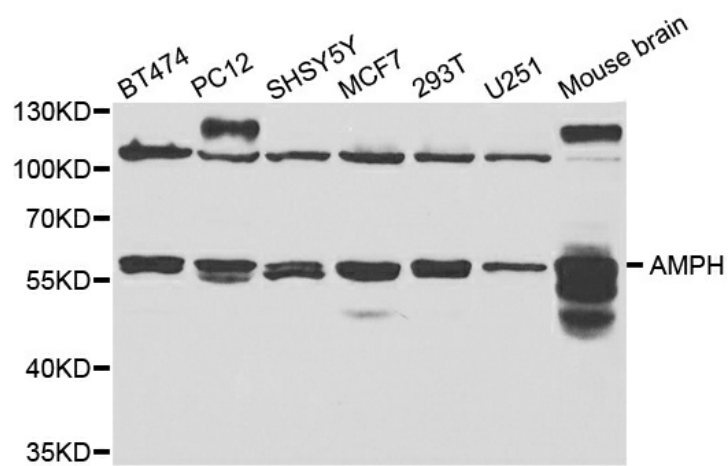


[View online »](#)

Protein Families: Secreted Protein

Protein Pathways: Fc gamma R-mediated phagocytosis

### Product images:



Western blot analysis of extracts of various cell lines, using AMPH antibody.