

## Product datasheet for **TA332660S**

### ADAM9 Rabbit Polyclonal Antibody

#### Product data:

Product Type:	Primary Antibodies
Applications:	ICC/IF, WB
Recommended Dilution:	WB 1:500 - 1:2000;IF 1:50- 1:200
Reactivity:	Human, Mouse, Rat
Host:	Rabbit
Isotype:	IgG
Clonality:	Polyclonal
Immunogen:	Recombinant protein of human ADAM9
Formulation:	Store at -20°C (regular) and -80°C (long term). Avoid freeze / thaw cycles. Buffer: PBS with 0.02% sodium azide, 50% glycerol, pH7.3.
Concentration:	lot specific
Purification:	Affinity purification
Conjugation:	Unconjugated
Storage:	Store at -20°C as received.
Stability:	Stable for 12 months from date of receipt.
Predicted Protein Size:	819
Gene Name:	ADAM metallopeptidase domain 9
Database Link:	<a href="#">NP_003807</a> <a href="#">Entrez Gene 11502 MouseEntrez Gene 290834 RatEntrez Gene 8754 Human Q13443</a>
Background:	This gene encodes a member of the ADAM (a disintegrin and metalloprotease domain) family. Members of this family are membrane-anchored proteins structurally related to snake venom disintegrins, and have been implicated in a variety of biological processes involving cell-cell and cell-matrix interactions, including fertilization, muscle development, and neurogenesis. The protein encoded by this gene interacts with SH3 domain-containing proteins, binds mitotic arrest deficient 2 beta protein, and is also involved in TPA-induced ectodomain shedding of membrane-anchored heparin-binding EGF-like growth factor. Several alternatively spliced transcript variants have been identified for this gene.

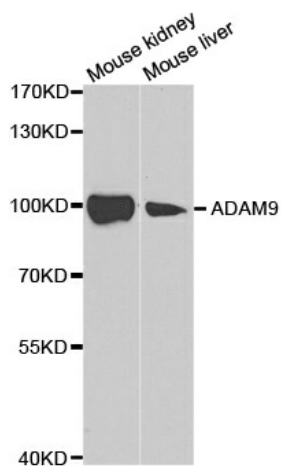


[View online »](#)

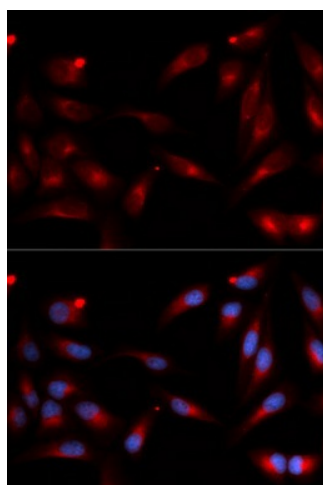
**Synonyms:**                   CORD9; MCMP; MDC9; Mltng

**Protein Families:**         Druggable Genome, Protease, Secreted Protein, Transmembrane

**Product images:**



Western blot analysis of extracts of various cell lines, using ADAM9 antibody.



Immunofluorescence analysis of U2OS cell using ADAM9 antibody. Blue: DAPI for nuclear staining.