

## Product datasheet for **TA332658**

### WIF1 Rabbit Polyclonal Antibody

#### Product data:

Product Type:	Primary Antibodies
Applications:	ICC/IF, WB
Recommended Dilution:	WB 1:500 - 1:2000;IF 1:50- 1:200
Reactivity:	Human, Mouse, Rat
Host:	Rabbit
Isotype:	IgG
Clonality:	Polyclonal
Immunogen:	Recombinant protein of human WIF1
Formulation:	Store at -20°C (regular) and -80°C (long term). Avoid freeze / thaw cycles. Buffer: PBS with 0.02% sodium azide, 50% glycerol, pH7.3.
Concentration:	lot specific
Purification:	Affinity purification
Conjugation:	Unconjugated
Storage:	Store at -20°C as received.
Stability:	Stable for 12 months from date of receipt.
Predicted Protein Size:	379
Gene Name:	WNT inhibitory factor 1
Database Link:	<a href="#">NP_009122</a> <a href="#">Entrez Gene 24117 Mouse</a> <a href="#">Entrez Gene 114557 Rat</a> <a href="#">Entrez Gene 11197 Human</a> <a href="#">Q9Y5W5</a>
Background:	he protein encoded by this gene functions to inhibit WNT proteins, which are extracellular signaling molecules that play a role in embryonic development. This protein contains a WNT inhibitory factor (WIF) domain and five epidermal growth factor (EGF)-like domains, and is thought to be involved in mesoderm segmentation. This gene functions as a tumor suppressor gene, and has been found to be epigenetically silenced in various cancers.
Synonyms:	WIF-1

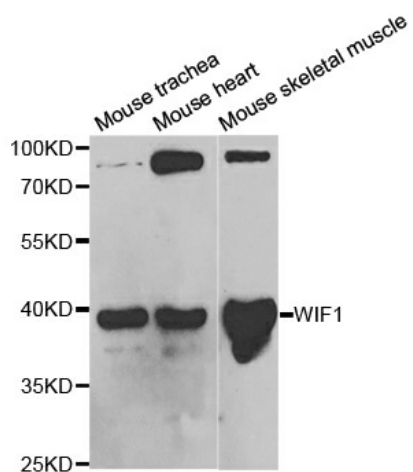


[View online »](#)

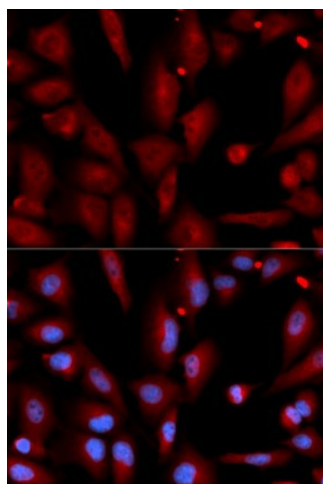
**Protein Families:** Cancer stem cells, Druggable Genome, ES Cell Differentiation/IPS, Secreted Protein, Stem cell relevant signaling - Wnt Signaling pathway

**Protein Pathways:** Wnt signaling pathway

**Product images:**



Western blot analysis of extracts of various cell lines, using WIF1 antibody.



Immunofluorescence analysis of U2OS cell using WIF1 antibody. Blue: DAPI for nuclear staining.