

## Product datasheet for **TA332654**

### Nectin 2 (NECTIN2) Rabbit Polyclonal Antibody

#### Product data:

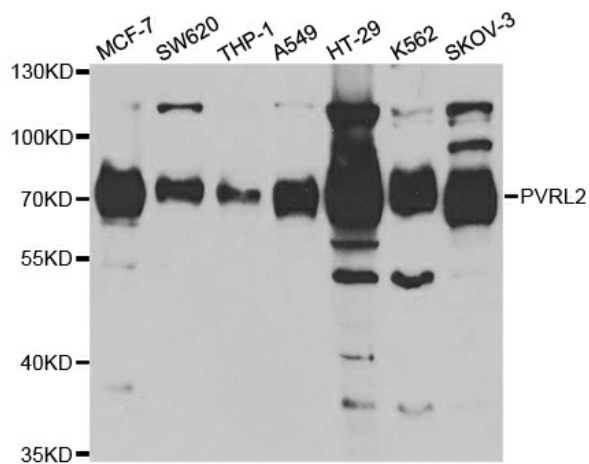
Product Type:	Primary Antibodies
Applications:	WB
Recommended Dilution:	WB 1:500 - 1:2000
Reactivity:	Human
Host:	Rabbit
Isotype:	IgG
Clonality:	Polyclonal
Immunogen:	Recombinant protein of human PVRL2
Formulation:	Store at -20°C (regular) and -80°C (long term). Avoid freeze / thaw cycles. Buffer: PBS with 0.02% sodium azide, 50% glycerol, pH7.3.
Concentration:	lot specific
Purification:	Affinity purification
Conjugation:	Unconjugated
Storage:	Store at -20°C as received.
Stability:	Stable for 12 months from date of receipt.
Gene Name:	nectin cell adhesion molecule 2
Database Link:	<a href="#">NP_002847</a> <a href="#">Entrez Gene 5819 Human</a> <a href="#">Q92692</a>
Background:	This gene encodes a single-pass type I membrane glycoprotein with two Ig-like C2-type domains and an Ig-like V-type domain. This protein is one of the plasma membrane components of adherens junctions. It also serves as an entry for certain mutant strains of herpes simplex virus and pseudorabies virus, and it is involved in cell to cell spreading of these viruses. Variations in this gene have been associated with differences in the severity of multiple sclerosis. Alternate transcriptional splice variants, encoding different isoforms, have been characterized.
Synonyms:	CD112; HVEB; PRR2; PVRR2
Protein Families:	Druggable Genome, Transmembrane



[View online »](#)

Protein Pathways: Adherens junction, Cell adhesion molecules (CAMs)

### Product images:



Western blot analysis of extracts of various cell lines, using PVRL2 antibody.