

## Product datasheet for **TA332650**

### **GDNF Receptor alpha 1 (GFRA1) Rabbit Polyclonal Antibody**

#### **Product data:**

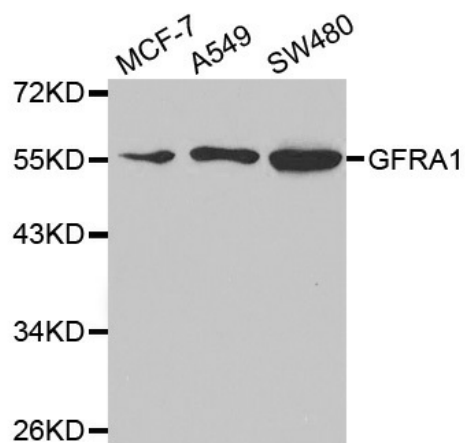
<b>Product Type:</b>	Primary Antibodies
<b>Applications:</b>	ICC/IF, IHC, WB
<b>Recommended Dilution:</b>	WB 1:500 - 1:2000;IF 1:50 - 1:200
<b>Reactivity:</b>	Human, Mouse, Rat
<b>Host:</b>	Rabbit
<b>Isotype:</b>	IgG
<b>Clonality:</b>	Polyclonal
<b>Immunogen:</b>	Recombinant protein of human GFRA1
<b>Formulation:</b>	Store at -20°C (regular) and -80°C (long term). Avoid freeze / thaw cycles. Buffer: PBS with 0.02% sodium azide, 50% glycerol, pH7.3.
<b>Concentration:</b>	lot specific
<b>Purification:</b>	Affinity purification
<b>Conjugation:</b>	Unconjugated
<b>Storage:</b>	Store at -20°C as received.
<b>Stability:</b>	Stable for 12 months from date of receipt.
<b>Predicted Protein Size:</b>	465
<b>Gene Name:</b>	GDNF family receptor alpha 1
<b>Database Link:</b>	<a href="#">NP_665736</a> <a href="#">Entrez Gene 14585 MouseEntrez Gene 25454 RatEntrez Gene 2674 Human P56159</a>
<b>Background:</b>	Glial cell line-derived neurotrophic factor (GDNF) and neurturin (NTN) are two structurally related, potent neurotrophic factors that play key roles in the control of neuron survival and differentiation. The protein encoded by this gene is a member of the GDNF receptor family. It is a glycosylphosphatidylinositol(GPI)-linked cell surface receptor for both GDNF and NTN, and mediates activation of the RET tyrosine kinase receptor. This gene is a candidate gene for Hirschsprung disease. Multiple alternatively spliced transcript variants have been described for this gene.
<b>Synonyms:</b>	GDNFR; GDNFRA; GFR-ALPHA-1; RET1L; RETL1; TRNR1



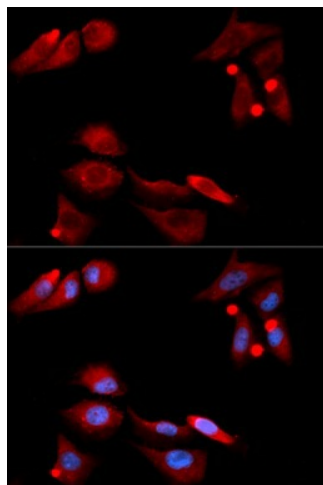
[View online »](#)

Protein Families: Druggable Genome

### Product images:



Western blot analysis of extracts of various cell lines, using GFRA1 antibody.



Immunofluorescence analysis of U2OS cell using GFRA1 antibody. Blue: DAPI for nuclear staining.