

Product datasheet for **TA332646**

Cathepsin H (CTSH) Rabbit Polyclonal Antibody

Product data:

Product Type:	Primary Antibodies
Applications:	WB
Recommended Dilution:	WB 1:500 - 1:2000
Reactivity:	Human, Mouse, Rat
Host:	Rabbit
Isotype:	IgG
Clonality:	Polyclonal
Immunogen:	Recombinant protein of human CTSH
Formulation:	Store at -20°C (regular) and -80°C (long term). Avoid freeze / thaw cycles. Buffer: PBS with 0.02% sodium azide, 50% glycerol, pH7.3.
Concentration:	lot specific
Purification:	Affinity purification
Conjugation:	Unconjugated
Storage:	Store at -20°C as received.
Stability:	Stable for 12 months from date of receipt.
Predicted Protein Size:	335
Gene Name:	cathepsin H
Database Link:	NP_004381 Entrez Gene 13036 Mouse Entrez Gene 25425 Rat Entrez Gene 1512 Human P09668
Background:	The protein encoded by this gene is a lysosomal cysteine proteinase important in the overall degradation of lysosomal proteins. It is composed of a dimer of disulfide-linked heavy and light chains, both produced from a single protein precursor. The encoded protein, which belongs to the peptidase C1 protein family, can act both as an aminopeptidase and as an endopeptidase. Increased expression of this gene has been correlated with malignant progression of prostate tumors.
Synonyms:	ACC-4; ACC-5; ACC4; ACC5; CPSB

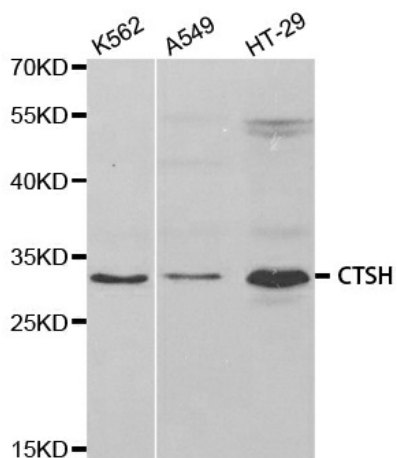


[View online »](#)

Protein Families: Druggable Genome, Protease

Protein Pathways: Lysosome

Product images:



Western blot analysis of extracts of various cell lines, using CTSH antibody.