

## Product datasheet for **TA332643S**

### Zinc Alpha 2 Glycoprotein (AZGP1) Rabbit Polyclonal Antibody

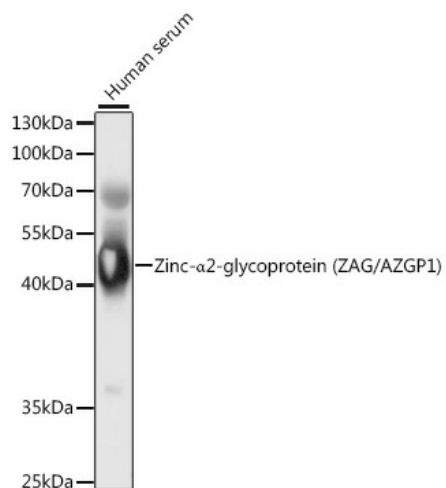
#### Product data:

Product Type:	Primary Antibodies
Applications:	ELISA, WB
Recommended Dilution:	WB, 1:500 - 1:2000 ELISA, Recommended starting concentration is 1 µg/mL. Please optimize the concentration based on your specific assay requirements.
Reactivity:	Human, Mouse
Host:	Rabbit
Isotype:	IgG
Clonality:	Polyclonal
Formulation:	Store at -20°C (regular) and -80°C (long term). Avoid freeze / thaw cycles. Buffer: PBS with 0.02% sodium azide, 50% glycerol, pH7.3.
Concentration:	lot specific
Purification:	Affinity purification
Conjugation:	Unconjugated
Storage:	Store at -20°C. Avoid freeze / thaw cycles.
Stability:	Stable for 12 months from date of receipt.
Predicted Protein Size:	34kDa
Gene Name:	alpha-2-glycoprotein 1, zinc-binding
Database Link:	<a href="#">NP_001176</a> <a href="#">Entrez Gene 563 Human</a> <a href="#">P25311</a>
Background:	Involved in cell adhesion and detection of chemical stimulus involved in sensory perception of bitter taste. Located in extracellular space.
Synonyms:	ZA2G; ZAG
Protein Families:	Secreted Protein



[View online »](#)

## Product images:



Western blot analysis of lysates from human serum