

Product datasheet for **TA332643**

Zinc Alpha 2 Glycoprotein (AZGP1) Rabbit Polyclonal Antibody

Product data:

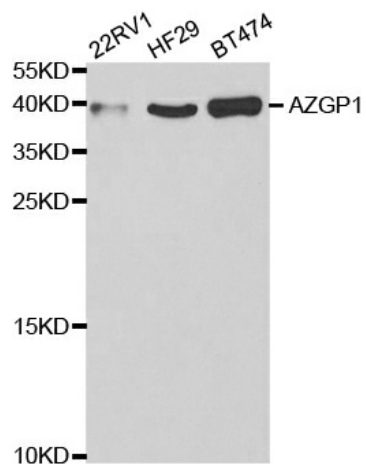
Product Type:	Primary Antibodies
Applications:	WB
Recommended Dilution:	WB 1:500 - 1:2000
Reactivity:	Human, Mouse
Host:	Rabbit
Isotype:	IgG
Clonality:	Polyclonal
Immunogen:	Recombinant protein of human AZGP1
Formulation:	Store at -20°C (regular) and -80°C (long term). Avoid freeze / thaw cycles. Buffer: PBS with 0.02% sodium azide, 50% glycerol, pH7.3.
Concentration:	lot specific
Purification:	Affinity purification
Conjugation:	Unconjugated
Storage:	Store at -20°C as received.
Stability:	Stable for 12 months from date of receipt.
Predicted Protein Size:	298
Gene Name:	alpha-2-glycoprotein 1, zinc-binding
Database Link:	NP_001176 Entrez Gene 563 Human P25311
Background:	Zinc-alpha-2-glycoprotein (AZGP1) is a soluble protein normally found in body fluids, functions as a lipid mobilizing factor (PMID: 19188554). It is known to be expressed in the secretory epithelia of the liver, lung, breast, GI tract and sweat glands, sharing significant structural similarity with the class I major histocompatibility complex (MHC) antigens (PMID: 3422450). AZGP1 is involved in carcinogenesis and differentiation. Altered expression of AZGP1 has been reported in breast cancer, prostate cancer and lung adenocarcinoma, hepatocellular carcinoma, pancreatic carcinoma and oral tumors (PMID: 22625427).
Synonyms:	ZA2G; ZAG



[View online »](#)

Protein Families: Secreted Protein

Product images:



Western blot analysis of extracts of various cell lines, using AZGP1 antibody.