

Product datasheet for **TA332642S**

Aprataxin Rabbit Polyclonal Antibody

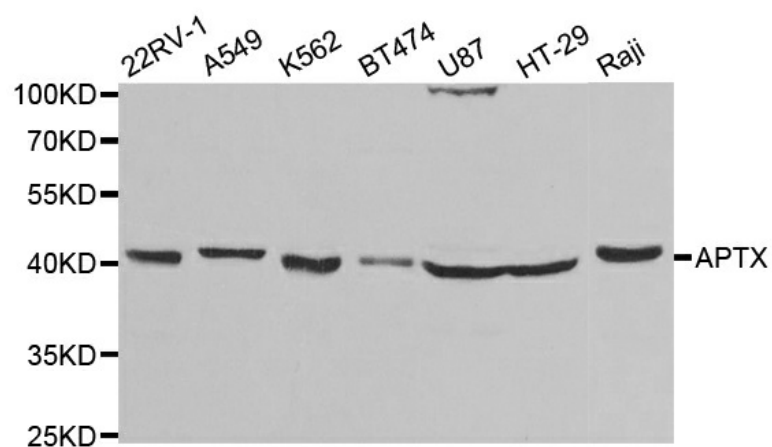
Product data:

Product Type:	Primary Antibodies
Applications:	ICC/IF, IP, WB
Recommended Dilution:	WB 1:500 - 1:2000;IF 1:50 - 1:200
Reactivity:	Human
Host:	Rabbit
Isotype:	IgG
Clonality:	Polyclonal
Immunogen:	Recombinant protein of human APTX
Formulation:	Store at -20°C (regular) and -80°C (long term). Avoid freeze / thaw cycles. Buffer: PBS with 0.02% sodium azide, 50% glycerol, pH7.3.
Concentration:	lot specific
Purification:	Affinity purification
Conjugation:	Unconjugated
Storage:	Store at -20°C as received.
Stability:	Stable for 12 months from date of receipt.
Predicted Protein Size:	41 kDa
Database Link:	NP_778241 Entrez Gene 54840 Human
Background:	This gene encodes a member of the histidine triad (HIT) superfamily. The encoded protein may play a role in single-stranded DNA repair through its nucleotide-binding activity and its diadenosine polyphosphate hydrolase activity. Mutations in this gene have been associated with ataxia-ocular apraxia. Alternatively spliced transcript variants have been identified for this gene.
Synonyms:	AOA; AOA1; aprataxin; ataxia 1; AXA1; EAOH; early onset with hypoalbuminemia; EOAHA; FHA-HIT; FLJ20157; MGC1072; OTTHUMP00000021188
Protein Families:	Druggable Genome

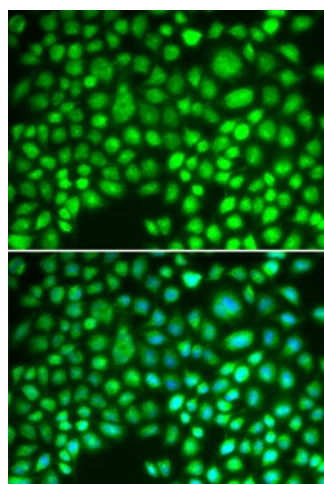


[View online »](#)

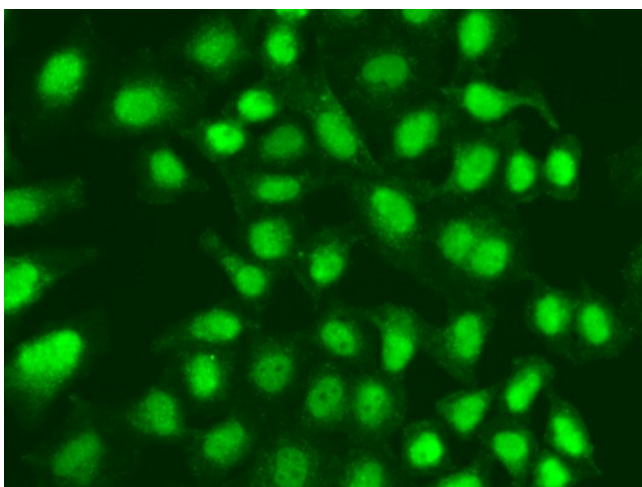
Product images:



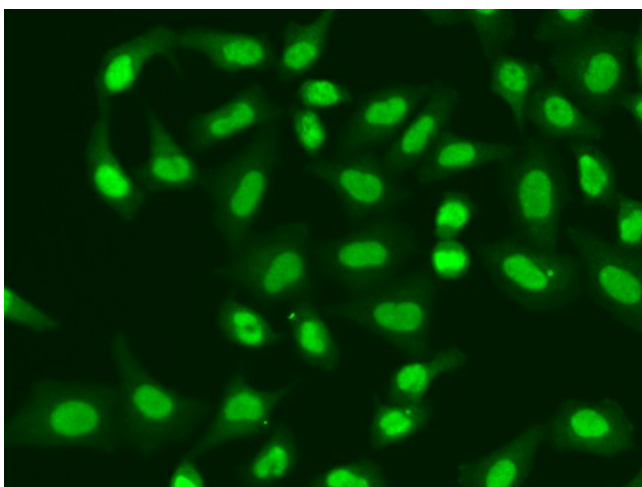
Western blot analysis of extracts of various cell lines, using APTX antibody.



Immunofluorescence analysis of HeLa cell using APTX antibody. Blue: DAPI for nuclear staining.



Immunofluorescence analysis of A549 cell using APTX antibody.



Immunofluorescence analysis of A549 cell using APTX antibody.