

## Product datasheet for **TA332639**

### SMARCE1 Rabbit Polyclonal Antibody

#### Product data:

Product Type:	Primary Antibodies
Applications:	ICC/IF, IHC, WB
Recommended Dilution:	WB 1:500 - 1:2000;IF 1:50 - 1:200
Reactivity:	Human, Mouse
Host:	Rabbit
Isotype:	IgG
Clonality:	Polyclonal
Immunogen:	Recombinant protein of human SMARCE1
Formulation:	Store at -20°C (regular) and -80°C (long term). Avoid freeze / thaw cycles. Buffer: PBS with 0.02% sodium azide, 50% glycerol, pH7.3.
Concentration:	lot specific
Purification:	Affinity purification
Conjugation:	Unconjugated
Storage:	Store at -20°C as received.
Stability:	Stable for 12 months from date of receipt.
Predicted Protein Size:	411
Gene Name:	SWI/SNF related, matrix associated, actin dependent regulator of chromatin, subfamily e, member 1
Database Link:	<a href="#">NP_003070</a> <a href="#">Entrez Gene 57376 Mouse</a> <a href="#">Entrez Gene 6605 Human</a> <a href="#">Q969G3</a>



[View online »](#)

**Background:**

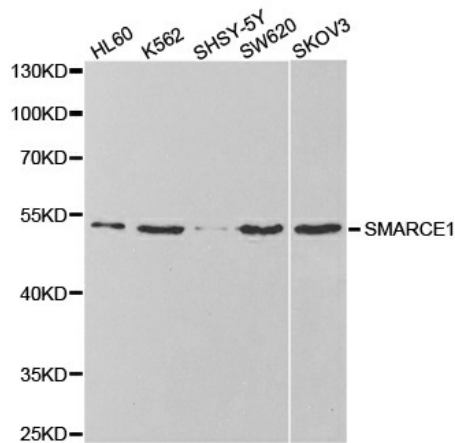
The protein encoded by this gene is part of the large ATP-dependent chromatin remodeling complex SWI/SNF, which is required for transcriptional activation of genes normally repressed by chromatin. The encoded protein, either alone or when in the SWI/SNF complex, can bind to 4-way junction DNA, which is thought to mimic the topology of DNA as it enters or exits the nucleosome. The protein contains a DNA-binding HMG domain, but disruption of this domain does not abolish the DNA-binding or nucleosome-displacement activities of the SWI/SNF complex. Unlike most of the SWI/SNF complex proteins, this protein has no yeast counterpart.

**Synonyms:**

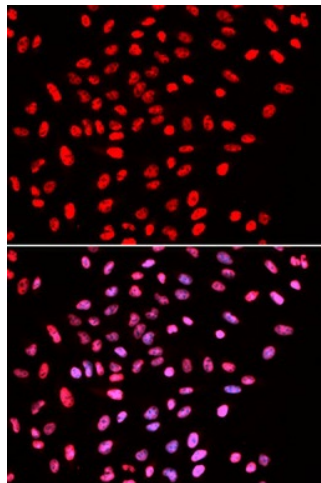
BAF57; CSS5

**Protein Families:**

Transcription Factors

**Product images:**


Western blot analysis of extracts of various cell lines, using SMARCE1 antibody.



Immunofluorescence analysis of U2OS cell using SMARCE1 antibody. Blue: DAPI for nuclear staining.