

## Product datasheet for TA332630S

### Lumican (LUM) Rabbit Polyclonal Antibody

#### Product data:

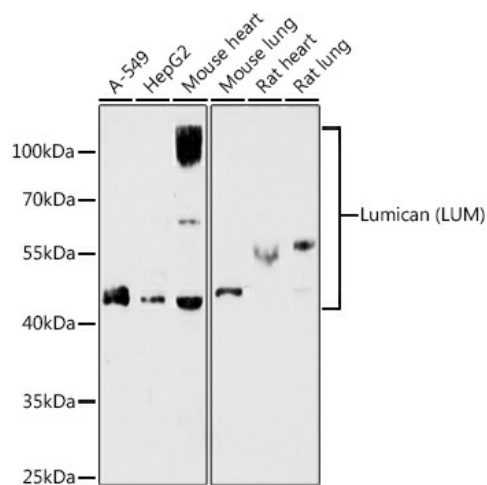
|                         |   |
|-------------------------|---|
| Product Type:           | Primary Antibodies  |
| Applications:           | ELISA, ICC/IF, WB   |
| Recommended Dilution:   | WB, 1:500 - 1:1000<br>IF/ICC, 1:50 - 1:200<br>ELISA, Recommended starting concentration is 1 µg/mL. Please optimize the concentration based on your specific assay requirements.  |
| Reactivity:             | Human, Mouse, Rat   |
| Host:                   | Rabbit  |
| Isotype:                | IgG   |
| Clonality:              | Polyclonal  |
| Formulation:            | PBS with 0.09% Sodium azide, 50% glycerol, pH7.3.   |
| Concentration:          | lot specific  |
| Purification:           | Affinity purification   |
| Conjugation:            | Unconjugated  |
| Storage:                | Store at -20°C. Avoid freeze / thaw cycles.   |
| Stability:              | Stable for 12 months from date of receipt.  |
| Predicted Protein Size: | 38kDa   |
| Gene Name:              | lumican   |
| Database Link:          | <a href="#">NP_002336</a><br><a href="#">Entrez Gene 17022 Mouse</a> <a href="#">Entrez Gene 81682 Rat</a> <a href="#">Entrez Gene 4060 Human</a><br><a href="#">P51884</a>   |
| Background:             | This gene encodes a member of the small leucine-rich proteoglycan (SLRP) family that includes decorin, biglycan, fibromodulin, keratocan, epiphykan, and osteoglycin. In these bifunctional molecules, the protein moiety binds collagen fibrils and the highly charged hydrophilic glycosaminoglycans regulate interfibrillar spacings. Lumican is the major keratan sulfate proteoglycan of the cornea but is also distributed in interstitial collagenous matrices throughout the body. Lumican may regulate collagen fibril organization and circumferential growth, corneal transparency, and epithelial cell migration and tissue repair. |


[View online »](#)

**Synonyms:** LDC; SLRR2D

**Protein Families:** Secreted Protein

**Product images:**



Western blot analysis of various lysates using Lumican (LUM) Rabbit pAb ([TA332630]) at 1:1000 dilution.

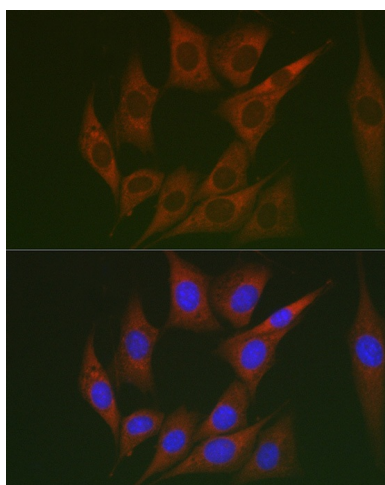
Secondary antibody: HRP-conjugated Goat anti-Rabbit IgG (H+L) (AS014) at 1:10000 dilution.

Lysates/proteins: 25µg per lane.

Blocking buffer: 3% nonfat dry milk in TBST.

Detection: ECL Basic Kit (RM00020).

Exposure time: 180s.



Immunofluorescence analysis of NIH/3T3 cells using Lumican (LUM) Rabbit pAb ([TA332630]) at dilution of 1:100 (40x lens). Secondary antibody: Cy3-conjugated Goat anti-Rabbit IgG (H+L) (AS007) at 1:500 dilution. Blue: DAPI for nuclear staining.