

Product datasheet for **TA332628**

IMPDH2 Rabbit Polyclonal Antibody

Product data:

Product Type:	Primary Antibodies
Applications:	ICC/IF, WB
Recommended Dilution:	WB 1:500 - 1:2000;IF 1:50- 1:200
Reactivity:	Human, Mouse, Rat
Host:	Rabbit
Isotype:	IgG
Clonality:	Polyclonal
Immunogen:	Recombinant protein of human IMPDH2
Formulation:	Store at -20°C (regular) and -80°C (long term). Avoid freeze / thaw cycles. Buffer: PBS with 0.02% sodium azide, 50% glycerol, pH7.3.
Concentration:	lot specific
Purification:	Affinity purification
Conjugation:	Unconjugated
Storage:	Store at -20°C as received.
Stability:	Stable for 12 months from date of receipt.
Predicted Protein Size:	514
Gene Name:	IMP (inosine 5'-monophosphate) dehydrogenase 2
Database Link:	NP_000875 Entrez Gene 23918 MouseEntrez Gene 301005 RatEntrez Gene 3615 Human P12268
Background:	This gene encodes the rate-limiting enzyme in the de novo guanine nucleotide biosynthesis. It is thus involved in maintaining cellular guanine deoxy- and ribonucleotide pools needed for DNA and RNA synthesis. The encoded protein catalyzes the NAD-dependent oxidation of inosine-5'-monophosphate into xanthine-5'-monophosphate, which is then converted into guanosine-5'-monophosphate. This gene is up-regulated in some neoplasms, suggesting it may play a role in malignant transformation.
Synonyms:	IMPD2; IMPDH-II

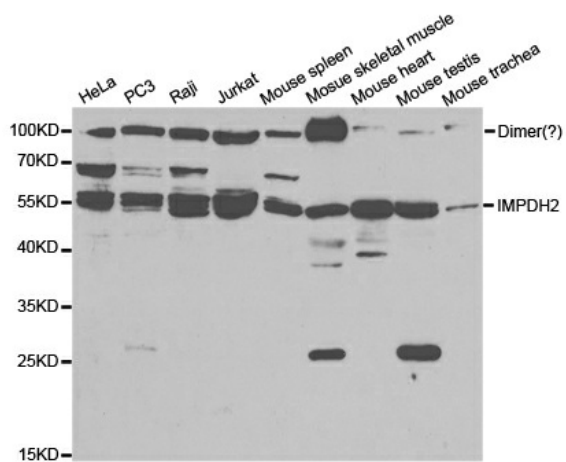


[View online »](#)

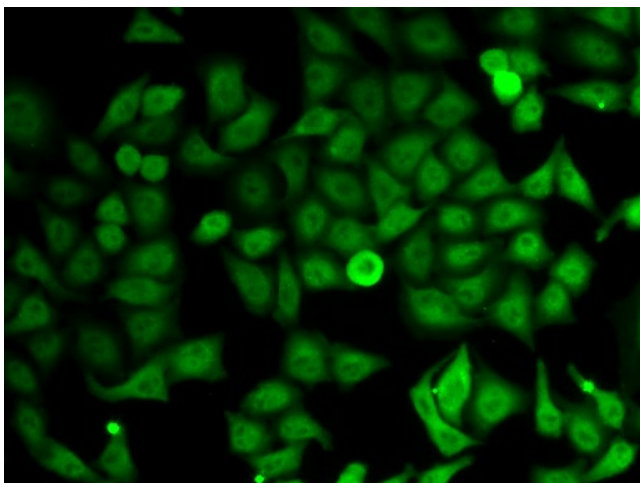
Protein Families: Druggable Genome

Protein Pathways: Drug metabolism - other enzymes, Metabolic pathways, Purine metabolism

Product images:



Western blot analysis of extracts of various cell lines, using IMPDH2 antibody.



Immunofluorescence analysis of HeLa cell using IMPDH2 antibody.