

## Product datasheet for **TA332627**

### Repulsive Guidance Molecule C (HFE2) Rabbit Polyclonal Antibody

#### Product data:

Product Type:	Primary Antibodies
Applications:	WB
Recommended Dilution:	WB 1:500 - 1:2000
Reactivity:	Mouse, Rat
Host:	Rabbit
Isotype:	IgG
Clonality:	Polyclonal
Immunogen:	Recombinant protein of human HFE2
Formulation:	Store at -20°C (regular) and -80°C (long term). Avoid freeze / thaw cycles. Buffer: PBS with 0.02% sodium azide, 50% glycerol, pH7.3.
Concentration:	lot specific
Purification:	Affinity purification
Conjugation:	Unconjugated
Storage:	Store at -20°C as received.
Stability:	Stable for 12 months from date of receipt.
Predicted Protein Size:	426
Gene Name:	hemochromatosis type 2 (juvenile)
Database Link:	<a href="#">NP_973733</a> <a href="#">Entrez Gene 69585 Mouse</a> <a href="#">Entrez Gene 310681 Rat</a> <a href="#">Q6ZVN8</a>
Background:	The product of this gene is involved in iron metabolism. It may be a component of the signaling pathway which activates hepcidin or it may act as a modulator of hepcidin expression. It could also represent the cellular receptor for hepcidin. Alternatively spliced transcript variants encoding different isoforms have been identified for this gene. Defects in this gene are the cause of hemochromatosis type 2A, also called juvenile hemochromatosis (JH). JH is an early-onset autosomal recessive disorder due to severe iron overload resulting in hypogonadotropic hypogonadism, hepatic fibrosis or cirrhosis and cardiomyopathy, occurring typically before age of 30.

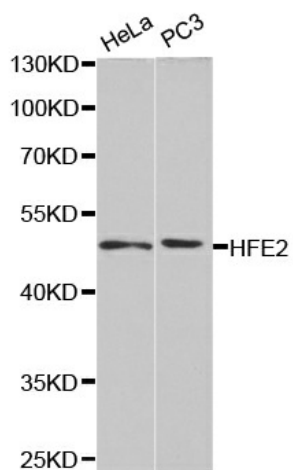


[View online »](#)

Synonyms: HFE2A; HJV; JH; RGMC

Protein Families: Transmembrane

### Product images:



Western blot analysis of extracts of various cell lines, using HFE2 antibody.