

Product datasheet for **TA332626**

HDGF Rabbit Polyclonal Antibody

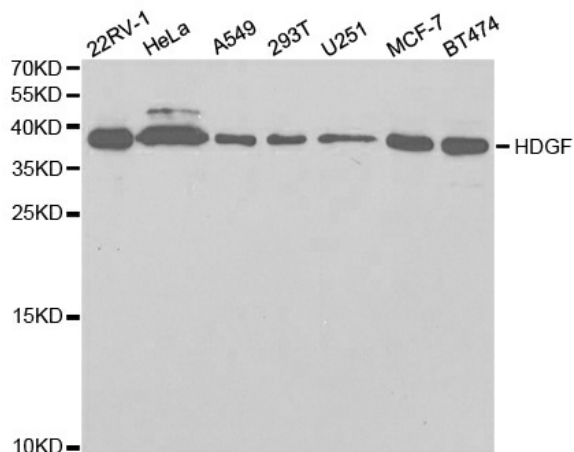
Product data:

Product Type:	Primary Antibodies
Applications:	ICC/IF, IHC, WB
Recommended Dilution:	WB 1:500 - 1:2000;IF 1:50 - 1:200
Reactivity:	Human, Mouse, Rat
Host:	Rabbit
Isotype:	IgG
Clonality:	Polyclonal
Immunogen:	Recombinant protein of human HDGF
Formulation:	Store at -20°C (regular) and -80°C (long term). Avoid freeze / thaw cycles. Buffer: PBS with 0.02% sodium azide, 50% glycerol, pH7.3.
Concentration:	lot specific
Purification:	Affinity purification
Conjugation:	Unconjugated
Storage:	Store at -20°C as received.
Stability:	Stable for 12 months from date of receipt.
Predicted Protein Size:	26 kDa
Gene Name:	hepatoma-derived growth factor
Database Link:	NP_004485 Entrez Gene 15191 MouseEntrez Gene 114499 RatEntrez Gene 3068 Human P51858
Background:	This gene encodes a member of the hepatoma-derived growth factor family. The encoded protein has mitogenic and DNA-binding activity and may play a role in cellular proliferation and differentiation. This gene was thought initially to be located on chromosome X, however, that location has been determined to correspond to a related pseudogene. Alternatively spliced transcript variants encoding distinct isoforms have been described.
Synonyms:	HMG1L2

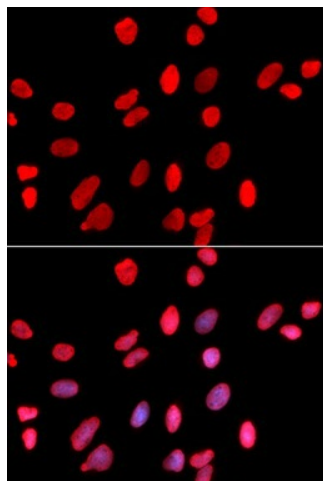


[View online »](#)

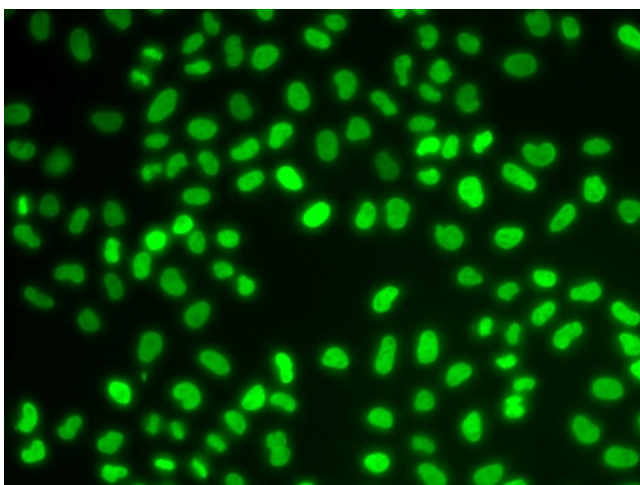
Product images:



Western blot analysis of extracts of various cell lines, using HDGF antibody.



Immunofluorescence analysis of U2OS cell using HDGF antibody. Blue: DAPI for nuclear staining.



Immunofluorescence analysis of A549 cell using HDGF antibody.