

## Product datasheet for **TA332624**

### GTF2A1 Rabbit Polyclonal Antibody

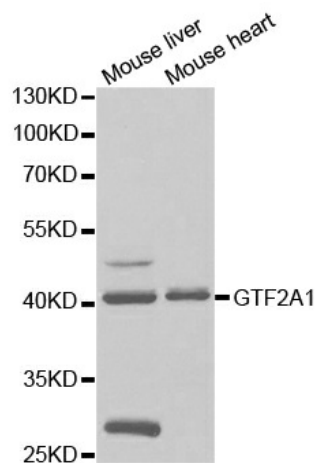
#### Product data:

|                         |   |
|-------------------------|---|
| Product Type:           | Primary Antibodies  |
| Applications:           | WB  |
| Recommended Dilution:   | WB 1:500 - 1:2000   |
| Reactivity:             | Human   |
| Host:                   | Rabbit  |
| Isotype:                | IgG   |
| Clonality:              | Polyclonal  |
| Immunogen:              | Recombinant protein of human GTF2A1   |
| Formulation:            | Store at -20°C (regular) and -80°C (long term). Avoid freeze / thaw cycles. Buffer: PBS with 0.02% sodium azide, 50% glycerol, pH7.3.   |
| Concentration:          | lot specific  |
| Purification:           | Affinity purification   |
| Conjugation:            | Unconjugated  |
| Storage:                | Store at -20°C as received.   |
| Stability:              | Stable for 12 months from date of receipt.  |
| Predicted Protein Size: | 376   |
| Gene Name:              | general transcription factor IIA subunit 1  |
| Database Link:          | <a href="#">NP_056943</a><br><a href="#">Entrez Gene 2957 Human P52655</a>  |
| Background:             | Accurate transcription initiation on TATA-containing class II genes involves the ordered assembly of RNA polymerase II (POLR2A; MIM 180660) and several general initiation factors (summarized by DeJong and Roeder, 1993 _). One of these factors is TFIIA, which when purified from HeLa extracts consists of 35-, 19-, and 12-kD subunits. |
| Synonyms:               | TF2A1; TFIIA; TFIIA-42; TFIIAL  |
| Protein Families:       | Transcription Factors   |
| Protein Pathways:       | Basal transcription factors   |



[View online »](#)

## Product images:



Western blot analysis of extracts of various cell lines, using GTF2A1 antibody.