

Product datasheet for **TA332619**

Apolipoprotein M (APOM) Rabbit Polyclonal Antibody

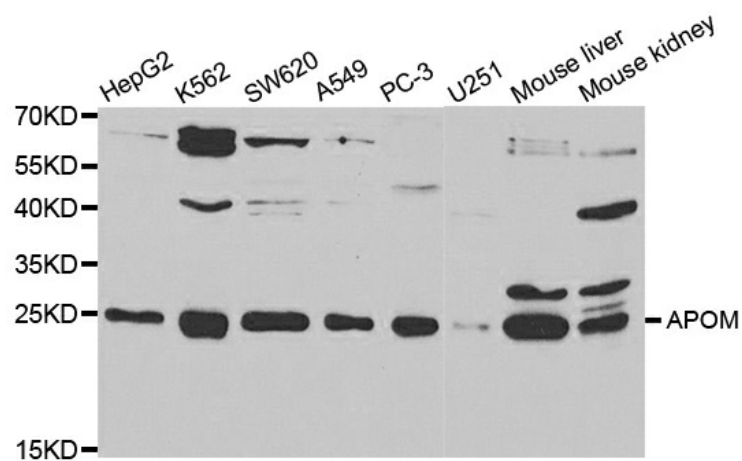
Product data:

Product Type:	Primary Antibodies
Applications:	ICC/IF, IHC, WB
Recommended Dilution:	WB 1:500 - 1:2000
Reactivity:	Human, Mouse, Rat
Host:	Rabbit
Isotype:	IgG
Clonality:	Polyclonal
Immunogen:	Recombinant protein of human APOM
Formulation:	PBS with 0.09% Sodium azide, 50% glycerol, pH7.3.
Concentration:	lot specific
Purification:	Affinity purification
Conjugation:	Unconjugated
Storage:	Store at -20°C as received.
Stability:	Stable for 12 months from date of receipt.
Predicted Protein Size:	188
Gene Name:	apolipoprotein M
Database Link:	NP_061974 Entrez Gene 55938 MouseEntrez Gene 55939 RatEntrez Gene 55937 Human O95445
Background:	The protein encoded by this gene is an apolipoprotein and member of the lipocalin protein family. It is found associated with high density lipoproteins and to a lesser extent with low density lipoproteins and triglyceride-rich lipoproteins. The encoded protein is secreted through the plasma membrane but remains membrane-bound, where it is involved in lipid transport. Alternate splicing results in both coding and non-coding variants of this gene.
Synonyms:	apo-M; G3a; HSPC336; NG20
Protein Families:	Secreted Protein



[View online »](#)

Product images:



Western blot analysis of extracts of various cell lines, using APOM antibody.