

Product datasheet for TA332616S

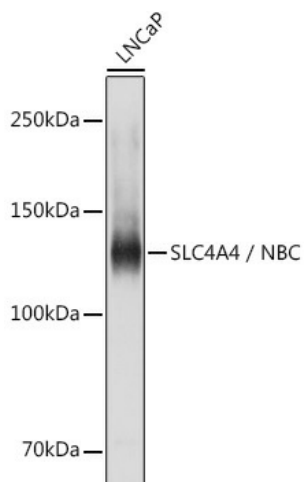
SLC4A4 Rabbit Polyclonal Antibody

Product data:

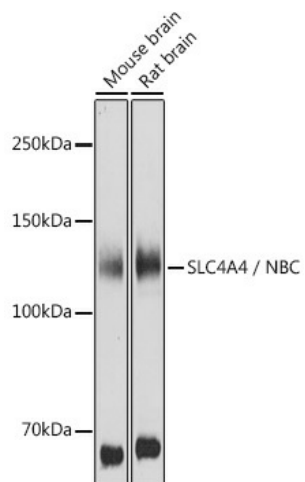
Product Type:	Primary Antibodies
Applications:	ELISA, ICC/IF, WB
Recommended Dilution:	WB, 1:500 - 1:1000 IF/ICC, 1:50 - 1:200 ELISA, Recommended starting concentration is 1 µg/mL. Please optimize the concentration based on your specific assay requirements.
Reactivity:	Human, Mouse, Rat
Host:	Rabbit
Isotype:	IgG
Clonality:	Polyclonal
Formulation:	PBS with 0.05% proclin300, 50% glycerol, pH 7.3.
Concentration:	lot specific
Purification:	Affinity purification
Conjugation:	Unconjugated
Storage:	Store at -20°C. Avoid freeze / thaw cycles.
Stability:	Stable for 12 months from date of receipt.
Predicted Protein Size:	121kDa
Gene Name:	solute carrier family 4 member 4
Database Link:	NP_001128214 Entrez Gene 54403 Mouse Entrez Gene 84484 Rat Entrez Gene 8671 Human Q9Y6R1
Background:	This gene encodes a sodium bicarbonate cotransporter (NBC) involved in the regulation of bicarbonate secretion and absorption and intracellular pH. Mutations in this gene are associated with proximal renal tubular acidosis. Multiple transcript variants encoding different isoforms have been found for this gene.
Synonyms:	hhNMC; HNBC1; KNBC; NBC1; NBC2; NBCe1-A; pNBC; SLC4A5
Protein Families:	Druggable Genome, Transmembrane


[View online »](#)

Product images:



Western blot analysis of lysates from LNCaP cells



Western blot analysis of various lysates using SLC4A4 / NBC Rabbit pAb ([TA332616]) at 1:1000 dilution.

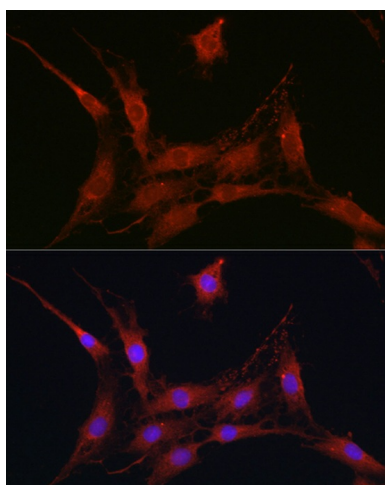
Secondary antibody: HRP-conjugated Goat anti-Rabbit IgG (H+L) (AS014) at 1:10000 dilution.

Lysates/proteins: 25µg per lane.

Blocking buffer: 3% nonfat dry milk in TBST.

Detection: ECL Basic Kit (RM00020).

Exposure time: 30s.



Immunofluorescence analysis of C6 cells using SLC4A4 / NBC Rabbit pAb ([TA332616]) at dilution of 1:100 (40x lens). Secondary antibody: Cy3-conjugated Goat anti-Rabbit IgG (H+L) (AS007) at 1:500 dilution. Blue: DAPI for nuclear staining.