

## Product datasheet for **TA332615**

### SGCE Rabbit Polyclonal Antibody

#### Product data:

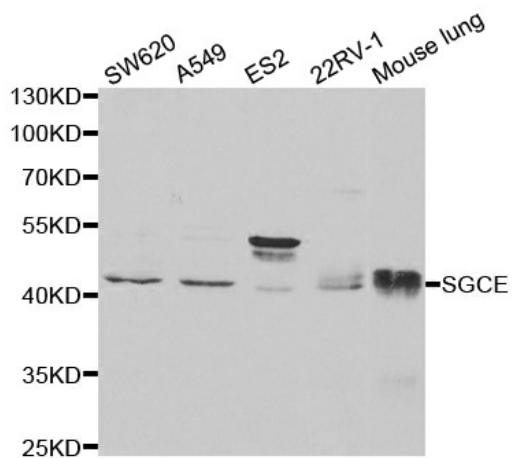
Product Type:	Primary Antibodies
Applications:	WB
Recommended Dilution:	WB 1:500 - 1:2000
Reactivity:	Human, Mouse
Host:	Rabbit
Isotype:	IgG
Clonality:	Polyclonal
Immunogen:	Recombinant protein of human SGCE
Formulation:	Store at -20°C (regular) and -80°C (long term). Avoid freeze / thaw cycles. Buffer: PBS with 0.02% sodium azide, 50% glycerol, pH7.3.
Concentration:	lot specific
Purification:	Affinity purification
Conjugation:	Unconjugated
Storage:	Store at -20°C as received.
Stability:	Stable for 12 months from date of receipt.
Predicted Protein Size:	437
Gene Name:	sarcoglycan epsilon
Database Link:	<a href="#">NP_001092870</a> <a href="#">Entrez Gene 20392 Mouse</a> <a href="#">Entrez Gene 8910 Human</a> <a href="#">O43556</a>
Background:	This gene encodes the epsilon member of the sarcoglycan family. Sarcoglycans are transmembrane proteins that are components of the dystrophin-glycoprotein complex, which link the actin cytoskeleton to the extracellular matrix. Unlike other family members which are predominantly expressed in striated muscle, the epsilon sarcoglycan is more broadly expressed. Mutations in this gene are associated with myoclonus-dystonia syndrome. This gene is imprinted, with preferential expression from the paternal allele. Alternatively spliced transcript variants encoding different isoforms have been found for this gene.
Synonyms:	DYT11; ESG



[View online »](#)

Protein Families: Transmembrane

### Product images:



Western blot analysis of extracts of various cell lines, using SGCE antibody.