

Product datasheet for **TA332614**

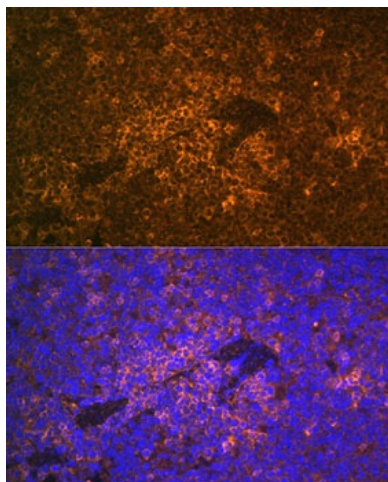
S100A12 Rabbit Polyclonal Antibody

Product data:

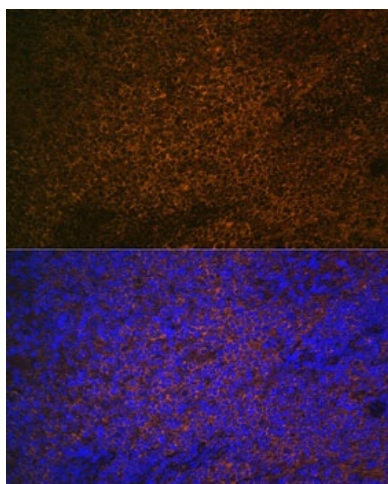
Product Type:	Primary Antibodies
Applications:	ICC/IF, IHC, WB
Recommended Dilution:	WB 1:500 - 1:2000;IF 1:50- 1:200
Reactivity:	Human
Host:	Rabbit
Isotype:	IgG
Clonality:	Polyclonal
Immunogen:	Recombinant protein of human S100A12
Formulation:	Store at -20°C (regular) and -80°C (long term). Avoid freeze / thaw cycles. Buffer: PBS with 0.02% sodium azide, 50% glycerol, pH7.3.
Concentration:	lot specific
Purification:	Affinity purification
Conjugation:	Unconjugated
Storage:	Store at -20°C as received.
Stability:	Stable for 12 months from date of receipt.
Predicted Protein Size:	92
Gene Name:	S100 calcium binding protein A12
Database Link:	NP_005612 Entrez Gene 6283 Human P80511
Background:	The protein encoded by this gene is a member of the S100 family of proteins containing 2 EF-hand calcium-binding motifs. S100 proteins are localized in the cytoplasm and/or nucleus of a wide range of cells, and involved in the regulation of a number of cellular processes such as cell cycle progression and differentiation. S100 genes include at least 13 members which are located as a cluster on chromosome 1q21. This protein is proposed to be involved in specific calcium-dependent signal transduction pathways and its regulatory effect on cytoskeletal components may modulate various neutrophil activities.
Synonyms:	CAAF1; CAGC; CGRP; ENRAGE; MRP-6; MRP6; p6



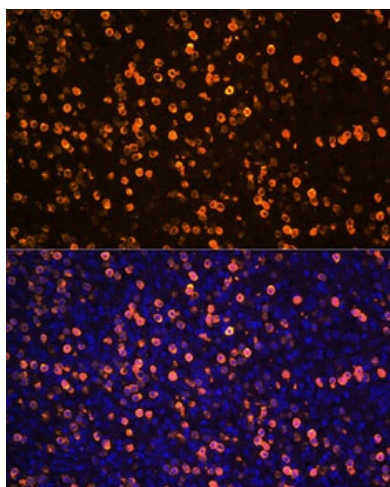
[View online »](#)

Product images:

Immunofluorescence analysis of Mouse spleen using S100A12 Rabbit pAb (TA332614) at dilution of 1:100. Blue: DAPI for nuclear staining.



Immunofluorescence analysis of Rat spleen using S100A12 Rabbit pAb (TA332614) at dilution of 1:100. Blue: DAPI for nuclear staining.



Immunofluorescence analysis of Human spleen using S100A12 Rabbit pAb (TA332614) at dilution of 1:100. Blue: DAPI for nuclear staining.