

Product datasheet for **TA332611**

PRKACB Rabbit Polyclonal Antibody

Product data:

Product Type:	Primary Antibodies
Applications:	ICC/IF, IHC, WB
Recommended Dilution:	WB 1:500 - 1:2000;IF 1:50- 1:200
Reactivity:	Human, Mouse, Rat
Host:	Rabbit
Isotype:	IgG
Clonality:	Polyclonal
Immunogen:	Recombinant protein of human PRKACB
Formulation:	Store at -20°C (regular) and -80°C (long term). Avoid freeze / thaw cycles. Buffer: PBS with 0.02% sodium azide, 50% glycerol, pH7.3.
Concentration:	lot specific
Purification:	Affinity purification
Conjugation:	Unconjugated
Storage:	Store at -20°C as received.
Stability:	Stable for 12 months from date of receipt.
Predicted Protein Size:	351
Gene Name:	protein kinase cAMP-activated catalytic subunit beta
Database Link:	NP_997461 Entrez Gene 18749 MouseEntrez Gene 293508 RatEntrez Gene 5567 Human P22694



[View online »](#)

Background:

cAMP is a signaling molecule important for a variety of cellular functions. cAMP exerts its effects by activating the cAMP-dependent protein kinase, which transduces the signal through phosphorylation of different target proteins. The inactive kinase holoenzyme is a tetramer composed of two regulatory and two catalytic subunits. cAMP causes the dissociation of the inactive holoenzyme into a dimer of regulatory subunits bound to four cAMP and two free monomeric catalytic subunits. Four different regulatory subunits and three catalytic subunits have been identified in humans. The protein encoded by this gene is a member of the Ser/Thr protein kinase family and is a catalytic subunit of cAMP-dependent protein kinase. Several alternatively spliced transcript variants encoding distinct isoforms have been observed.

Synonyms:

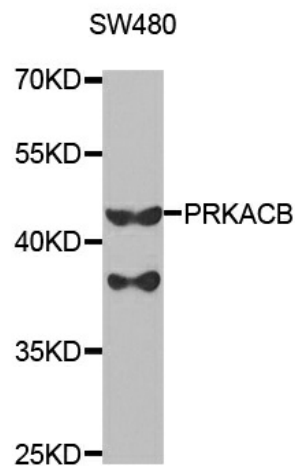
PKA C-beta; PKACB

Protein Families:

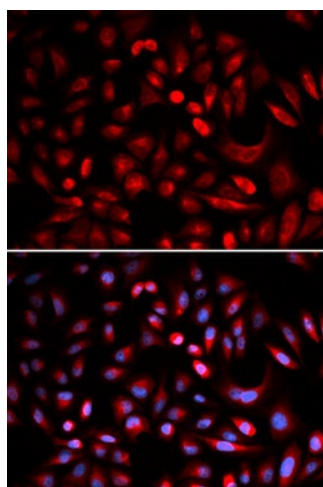
Druggable Genome, Protein Kinase

Protein Pathways:

Apoptosis, Calcium signaling pathway, Chemokine signaling pathway, Dilated cardiomyopathy, Gap junction, GnRH signaling pathway, Hedgehog signaling pathway, Insulin signaling pathway, Long-term potentiation, MAPK signaling pathway, Melanogenesis, Olfactory transduction, Oocyte meiosis, Prion diseases, Progesterone-mediated oocyte maturation, Taste transduction, Vascular smooth muscle contraction, Vibrio cholerae infection, Wnt signaling pathway

Product images:

Western blot analysis of extracts of SW480 cell line, using PRKACB antibody.



Immunofluorescence analysis of U2OS cell using PRKACB antibody. Blue: DAPI for nuclear staining.