

## Product datasheet for **TA332607S**

### Plasma Kallikrein 1B (KLKB1) Rabbit Polyclonal Antibody

#### Product data:

Product Type:	Primary Antibodies
Applications:	ELISA, IHC, WB
Recommended Dilution:	WB, 1:500 - 1:1000 IHC-P, 1:50 - 1:200 ELISA, Recommended starting concentration is 1 µg/mL. Please optimize the concentration based on your specific assay requirements.
Reactivity:	Human, Mouse, Rat
Host:	Rabbit
Isotype:	IgG
Clonality:	Polyclonal
Formulation:	PBS with 0.09% Sodium azide, 50% glycerol, pH 7.3.
Concentration:	lot specific
Purification:	Affinity purification
Conjugation:	Unconjugated
Storage:	Store at -20°C. Avoid freeze / thaw cycles.
Stability:	Stable for 12 months from date of receipt.
Predicted Protein Size:	71kDa
Gene Name:	kallikrein B1
Database Link:	<a href="#">NP_000883</a> <a href="#">Entrez Gene 16621 Mouse</a> <a href="#">Entrez Gene 25048 Rat</a> <a href="#">Entrez Gene 3818 Human</a> <a href="#">P03952</a>

**Background:** This gene encodes a glycoprotein that participates in the surface-dependent activation of blood coagulation, fibrinolysis, kinin generation and inflammation. The encoded preproprotein present in plasma as a non-covalent complex with high molecular weight kininogen undergoes proteolytic processing mediated by activated coagulation factor XII to generate a disulfide-linked, heterodimeric serine protease comprised of heavy and light chains. Certain mutations in this gene cause prekallikrein deficiency. Alternative splicing results in multiple transcript variants encoding different isoforms.

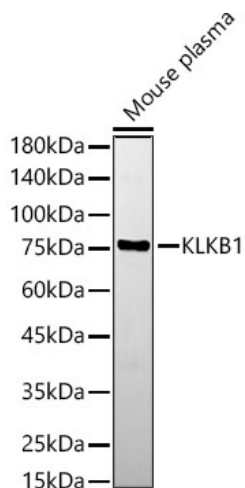

[View online »](#)

**Synonyms:** KLK3; PPK

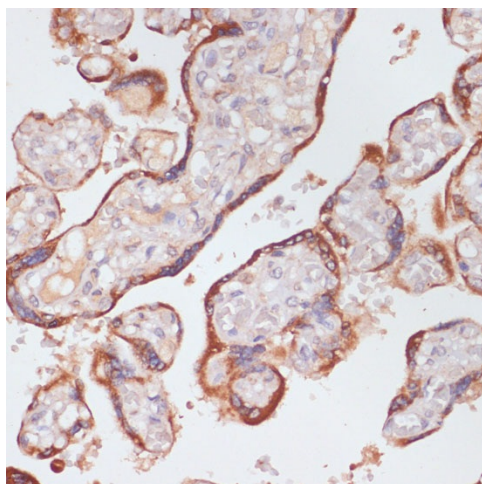
**Protein Families:** Druggable Genome, Protease

**Protein Pathways:** Complement and coagulation cascades

**Product images:**



Western blot analysis of lysates from Mouse plasma



Immunohistochemistry analysis of paraffin-embedded Human placenta using KLKB1 Rabbit pAb ([TA332607]) at dilution of 1:100 (40x lens). Microwave antigen retrieval performed with 0.01M PBS Buffer (pH 7.2) prior to IHC staining.