

Product datasheet for **TA332605**

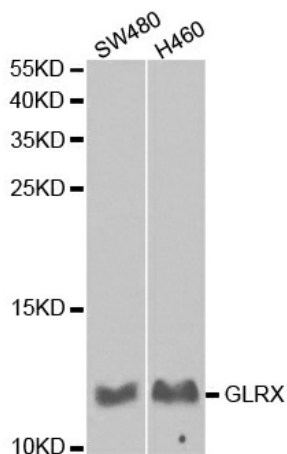
Glutaredoxin 1 (GLRX) Rabbit Polyclonal Antibody

Product data:

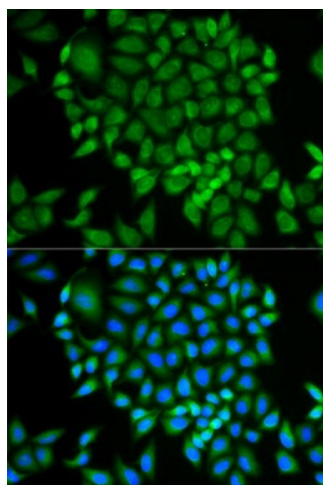
Product Type:	Primary Antibodies
Applications:	ICC/IF, IHC, WB
Recommended Dilution:	WB 1:500 - 1:2000;IF 1:50- 1:200
Reactivity:	Human, Mouse, Rat
Host:	Rabbit
Isotype:	IgG
Clonality:	Polyclonal
Immunogen:	Recombinant protein of human GLRX
Formulation:	PBS with 0.09% Sodium azide,50% glycerol,pH7.3.
Concentration:	lot specific
Purification:	Affinity purification
Conjugation:	Unconjugated
Storage:	Store at -20°C as received.
Stability:	Stable for 12 months from date of receipt.
Predicted Protein Size:	106
Gene Name:	glutaredoxin
Database Link:	NP_002055 Entrez Gene 64045 Rat Entrez Gene 93692 Mouse Entrez Gene 2745 Human P35754
Background:	This gene encodes a member of the glutaredoxin family. The encoded protein is a cytoplasmic enzyme catalyzing the reversible reduction of glutathione-protein mixed disulfides. This enzyme highly contributes to the antioxidant defense system. It is crucial for several signalling pathways by controlling the S-glutathionylation status of signalling mediators. It is involved in beta-amyloid toxicity and Alzheimer's disease. Multiple alternatively spliced transcript variants encoding the same protein have been identified.
Synonyms:	GRX; GRX1
Protein Families:	Druggable Genome



[View online »](#)

Product images:

Western blot analysis of extracts of various cell lines, using GLRX antibody.



Immunofluorescence analysis of MCF-7 cell using GLRX antibody. Blue: DAPI for nuclear staining.