

Product datasheet for **TA332604S**

GCLM Rabbit Polyclonal Antibody

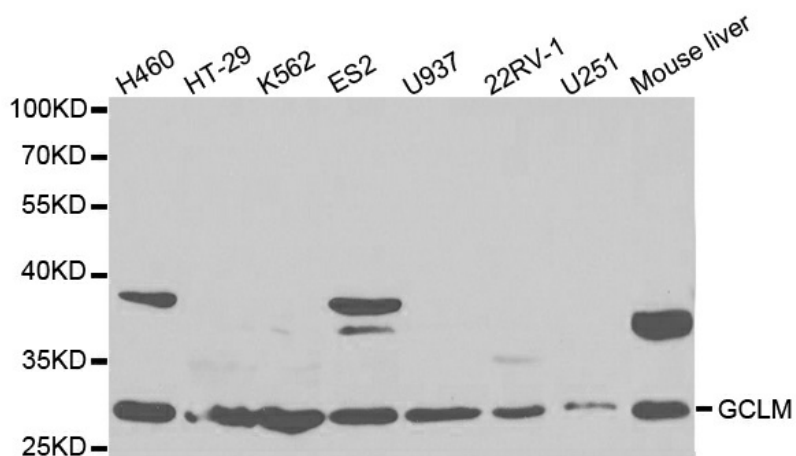
Product data:

Product Type:	Primary Antibodies
Applications:	ICC/IF, WB
Recommended Dilution:	WB 1:500 - 1:2000;IF 1:50- 1:200
Reactivity:	Human, Mouse, Rat
Host:	Rabbit
Isotype:	IgG
Clonality:	Polyclonal
Immunogen:	Recombinant protein of human GCLM
Formulation:	Store at -20°C (regular) and -80°C (long term). Avoid freeze / thaw cycles. Buffer: PBS with 0.02% sodium azide, 50% glycerol, pH7.3.
Concentration:	lot specific
Purification:	Affinity purification
Conjugation:	Unconjugated
Storage:	Store at -20°C as received.
Stability:	Stable for 12 months from date of receipt.
Predicted Protein Size:	274
Gene Name:	glutamate-cysteine ligase modifier subunit
Database Link:	NP_002052 Entrez Gene 14630 MouseEntrez Gene 29739 RatEntrez Gene 2730 Human P48507
Background:	Glutamate-cysteine ligase, also known as gamma-glutamylcysteine synthetase, is the first rate limiting enzyme of glutathione synthesis. The enzyme consists of two subunits, a heavy catalytic subunit and a light regulatory subunit. Gamma glutamylcysteine synthetase deficiency has been implicated in some forms of hemolytic anemia.
Synonyms:	GLCLR
Protein Families:	Druggable Genome
Protein Pathways:	Glutathione metabolism, Metabolic pathways

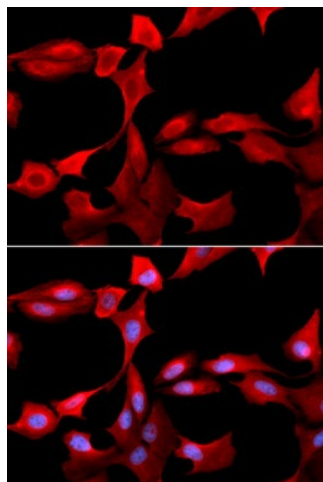


[View online »](#)

Product images:



Western blot analysis of extracts of various cell lines, using GCLM antibody.



Immunofluorescence analysis of U20S cell using GCLM antibody. Blue: DAPI for nuclear staining.