

Product datasheet for **TA332601S**

Cullin 2 (CUL2) Rabbit Polyclonal Antibody

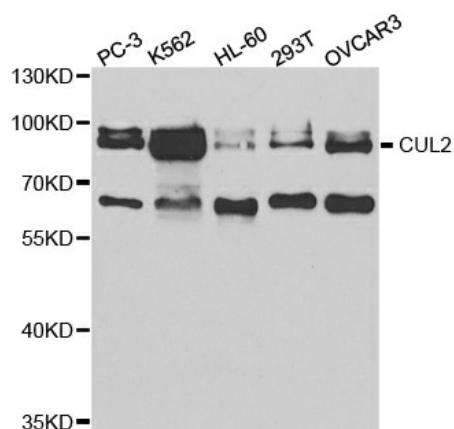
Product data:

Product Type:	Primary Antibodies
Applications:	ICC/IF, WB
Recommended Dilution:	WB 1:500 - 1:2000;IF 1:50- 1:200
Reactivity:	Human
Host:	Rabbit
Isotype:	IgG
Clonality:	Polyclonal
Immunogen:	Recombinant protein of human CUL2
Formulation:	Store at -20°C (regular) and -80°C (long term). Avoid freeze / thaw cycles. Buffer: PBS with 0.02% sodium azide, 50% glycerol, pH7.3.
Concentration:	lot specific
Purification:	Affinity purification
Conjugation:	Unconjugated
Storage:	Store at -20°C as received.
Stability:	Stable for 12 months from date of receipt.
Gene Name:	cullin 2
Database Link:	NP_003582 Entrez Gene 8453 Human Q13617
Background:	CUL2 is a core component of multiple cullin-RING-based ECS (ElonginB/C-CUL2/5-SOCS-box protein) E3 ubiquitin-protein ligase complexes, which mediate the ubiquitination of target proteins. It serves as a rigid scaffold in the complex and may contribute to catalysis through positioning of the substrate and the ubiquitin-conjugating enzyme.
Synonyms:	MGC131970
Protein Families:	Druggable Genome
Protein Pathways:	Pathways in cancer, Renal cell carcinoma, Ubiquitin mediated proteolysis

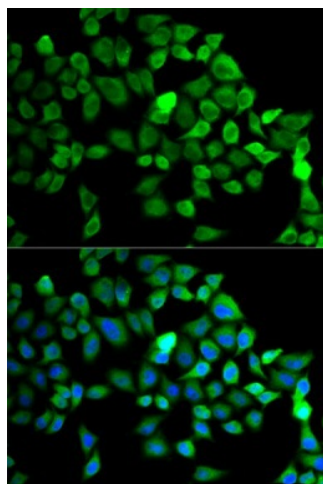


[View online »](#)

Product images:



Western blot analysis of extracts of various cell lines, using CUL2 antibody.



Immunofluorescence analysis of MCF-7 cell using CUL2 antibody. Blue: DAPI for nuclear staining.