

Product datasheet for **TA332600**

CPT1A Rabbit Polyclonal Antibody

Product data:

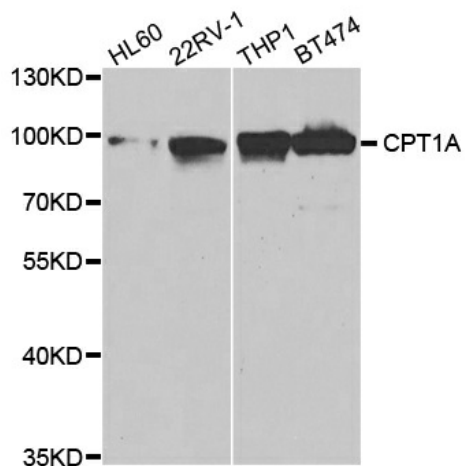
Product Type:	Primary Antibodies
Applications:	ICC/IF, IHC, IP, WB
Recommended Dilution:	WB 1:500 - 1:2000;IF 1:50- 1:200
Reactivity:	Human, Mouse, Rat
Host:	Rabbit
Isotype:	IgG
Clonality:	Polyclonal
Immunogen:	Recombinant protein of human CPT1A
Formulation:	Store at -20°C (regular) and -80°C (long term). Avoid freeze / thaw cycles. Buffer: PBS with 0.02% sodium azide, 50% glycerol, pH7.3.
Concentration:	lot specific
Purification:	Affinity purification
Conjugation:	Unconjugated
Storage:	Store at -20°C as received.
Stability:	Stable for 12 months from date of receipt.
Gene Name:	carnitine palmitoyltransferase 1A
Database Link:	NP_001867 Entrez Gene 12894 Mouse Entrez Gene 25757 Rat Entrez Gene 1374 Human P50416
Background:	The mitochondrial oxidation of long-chain fatty acids is initiated by the sequential action of carnitine palmitoyltransferase I (which is located in the outer membrane and is detergent-labile) and carnitine palmitoyltransferase II (which is located in the inner membrane and is detergent-stable), together with a carnitine-acylcarnitine translocase. CPT I is the key enzyme in the carnitine-dependent transport across the mitochondrial inner membrane and its deficiency results in a decreased rate of fatty acid beta-oxidation. Alternatively spliced transcript variants encoding different isoforms have been found for this gene.
Synonyms:	CPT1; CPT1-L; L-CPT1
Protein Families:	Druggable Genome, Transmembrane



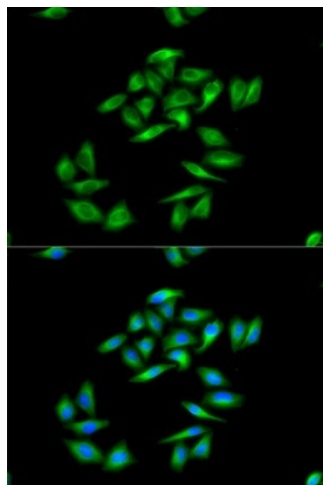
[View online »](#)

Protein Pathways: Adipocytokine signaling pathway, Fatty acid metabolism, PPAR signaling pathway

Product images:



Western blot analysis of extracts of various cell lines, using CPT1A antibody.



Immunofluorescence analysis of MCF-7 cell using CPT1A antibody. Blue: DAPI for nuclear staining.