

Product datasheet for **TA332599S**

CHRNA1 Rabbit Polyclonal Antibody

Product data:

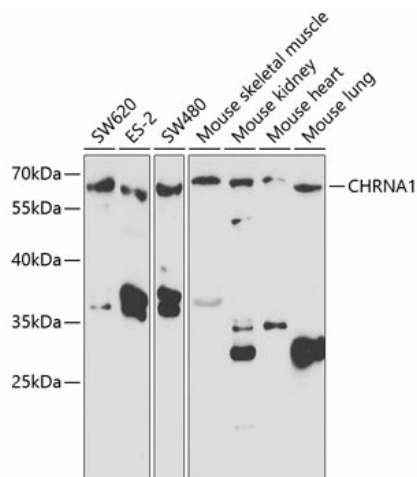
| | |
|-------------------------|--|
| Product Type: | Primary Antibodies |
| Applications: | ELISA, ICC/IF, IHC, WB |
| Recommended Dilution: | WB, 1:500 - 1:2000 IHC-P, 1:50 - 1:200 IF/ICC, 1:50 - 1:200 ELISA, Recommended starting concentration is 1 µg/mL. Please optimize the concentration based on your specific assay requirements. |
| Reactivity: | Human, Mouse |
| Host: | Rabbit |
| Isotype: | IgG |
| Clonality: | Polyclonal |
| Formulation: | Store at -20°C (regular) and -80°C (long term). Avoid freeze / thaw cycles. Buffer: PBS with 0.02% sodium azide, 50% glycerol, pH7.3. |
| Concentration: | lot specific |
| Purification: | Affinity purification |
| Conjugation: | Unconjugated |
| Storage: | Store at -20°C. Avoid freeze / thaw cycles. |
| Stability: | Stable for 12 months from date of receipt. |
| Predicted Protein Size: | 52kDa |
| Gene Name: | cholinergic receptor nicotinic alpha 1 subunit |
| Database Link: | NP_001034612 Entrez Gene 11435 Mouse Entrez Gene 1134 Human P02708 |
| Background: | The muscle acetylcholine receptor consists of 5 subunits of 4 different types: 2 alpha subunits and 1 each of the beta, gamma, and delta subunits. This gene encodes an alpha subunit that plays a role in acetylcholine binding/channel gating. Alternatively spliced transcript variants encoding different isoforms have been identified. |
| Synonyms: | ACHRA; ACHRD; CHRNA; CMS1A; CMS1B; CMS2A; FCCMS; SCCMS |



[View online »](#)

Protein Families: Druggable Genome, Ion Channels: Cys-loop Receptors, Transmembrane

Product images:



Western blot analysis of various lysates using CHRNA1 Rabbit pAb (TA332599) at 1:1000 dilution.

Secondary antibody: HRP-conjugated Goat anti-Rabbit IgG (H+L) (AS014) at 1:10000 dilution.

Lysates/proteins: 25µg per lane.

Blocking buffer: 3% nonfat dry milk in TBST.

Detection: ECL Basic Kit (RM00020).

Exposure time: 90s.