

## Product datasheet for TA332599

### CHRNA1 Rabbit Polyclonal Antibody

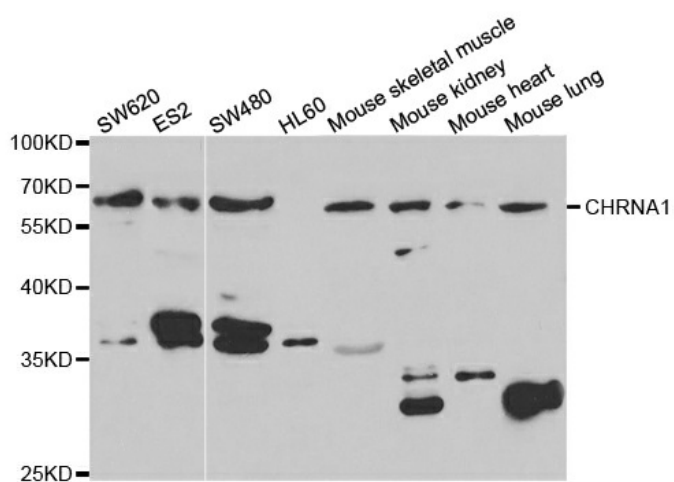
#### Product data:

Product Type:	Primary Antibodies
Applications:	WB
Recommended Dilution:	WB 1:500 - 1:2000
Reactivity:	Human, Mouse
Host:	Rabbit
Isotype:	IgG
Clonality:	Polyclonal
Immunogen:	Recombinant protein of human CHRNA1
Formulation:	Store at -20°C (regular) and -80°C (long term). Avoid freeze / thaw cycles. Buffer: PBS with 0.02% sodium azide, 50% glycerol, pH7.3.
Concentration:	lot specific
Purification:	Affinity purification
Conjugation:	Unconjugated
Storage:	Store at -20°C as received.
Stability:	Stable for 12 months from date of receipt.
Gene Name:	cholinergic receptor nicotinic alpha 1 subunit
Database Link:	<a href="#">NP_001034612</a> <a href="#">Entrez Gene 11435 Mouse</a> <a href="#">Entrez Gene 1134 Human</a> <a href="#">P02708</a>
Background:	The muscle acetylcholine receptor consists of 5 subunits of 4 different types: 2 alpha subunits and 1 each of the beta, gamma, and delta subunits. This gene encodes an alpha subunit that plays a role in acetylcholine binding/channel gating. Alternatively spliced transcript variants encoding different isoforms have been identified.
Synonyms:	ACHRA; ACHRD; CHRNA; CMS1A; CMS1B; CMS2A; FCCMS; SCCMS
Protein Families:	Druggable Genome, Ion Channels: Cys-loop Receptors, Transmembrane



[View online »](#)

## Product images:



Western blot analysis of extracts of various cell lines, using CHRNA1 antibody.