

## Product datasheet for **TA332596**

### Twinkle (TWNK) Rabbit Polyclonal Antibody

#### Product data:

Product Type:	Primary Antibodies
Applications:	WB
Recommended Dilution:	WB 1:500 - 1:2000
Reactivity:	Human, Mouse, Rat
Host:	Rabbit
Isotype:	IgG
Clonality:	Polyclonal
Immunogen:	Recombinant protein of human C10orf2
Formulation:	PBS with 0.09% Sodium azide,50% glycerol,pH7.3.
Concentration:	lot specific
Purification:	Affinity purification
Conjugation:	Unconjugated
Storage:	Store at -20°C as received.
Stability:	Stable for 12 months from date of receipt.
Predicted Protein Size:	684
Gene Name:	chromosome 10 open reading frame 2
Database Link:	<a href="#">NP_068602</a> <a href="#">Entrez Gene 226153</a> <a href="#">MouseEntrez Gene 309441</a> <a href="#">RatEntrez Gene 56652</a> <a href="#">Human Q96RR1</a>

**Background:** This gene encodes a hexameric DNA helicase which unwinds short stretches of double-stranded DNA in the 5' to 3' direction and, along with mitochondrial single-stranded DNA binding protein and mtDNA polymerase gamma, is thought to play a key role in mtDNA replication. The protein localizes to the mitochondrial matrix and mitochondrial nucleoids. Mutations in this gene cause infantile onset spinocerebellar ataxia (IOSCA) and progressive external ophthalmoplegia (PEO) and are also associated with several mitochondrial depletion syndromes. Alternative splicing results in multiple transcript variants encoding distinct isoforms.

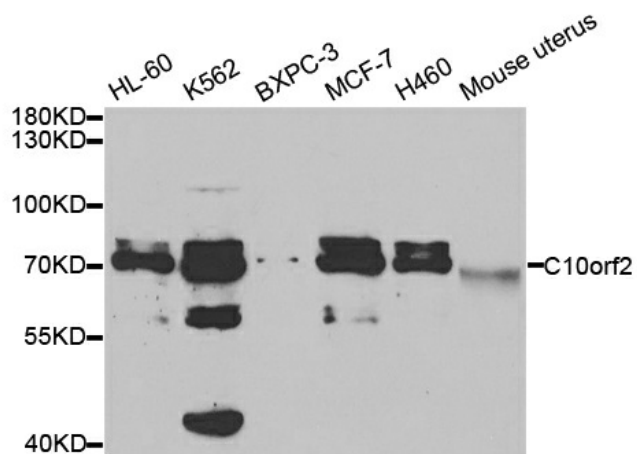
**Synonyms:** ATXN8; IOSCA; MTDPS7; PEO; PEO1; PEOA3; PRLTS5; SANDO; SCA8; TWINKL



[View online »](#)

Protein Families: Druggable Genome

### Product images:



Western blot analysis of extracts of various cell lines, using C10orf2 antibody.