

## Product datasheet for **TA332595**

### SPG3A (ATL1) Rabbit Polyclonal Antibody

#### Product data:

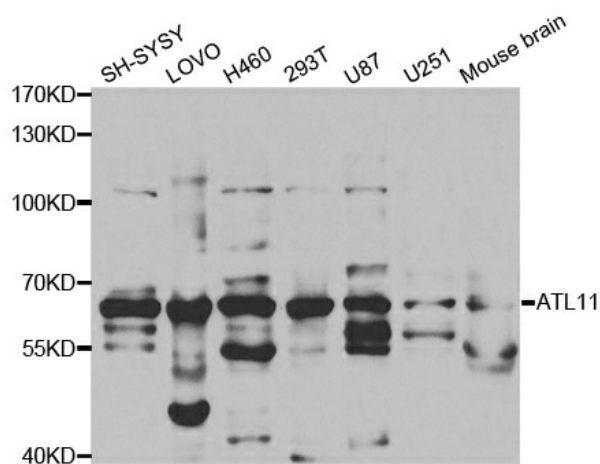
Product Type:	Primary Antibodies
Applications:	ICC/IF, WB
Recommended Dilution:	WB 1:500 - 1:2000;IF 1:50- 1:200
Reactivity:	Human, Mouse
Host:	Rabbit
Isotype:	IgG
Clonality:	Polyclonal
Immunogen:	Recombinant protein of human ATL1
Formulation:	Store at -20°C (regular) and -80°C (long term). Avoid freeze / thaw cycles. Buffer: PBS with 0.02% sodium azide, 50% glycerol, pH7.3.
Concentration:	lot specific
Purification:	Affinity purification
Conjugation:	Unconjugated
Storage:	Store at -20°C as received.
Stability:	Stable for 12 months from date of receipt.
Predicted Protein Size:	558
Gene Name:	atlastin GTPase 1
Database Link:	<a href="#">NP_056999</a> <a href="#">Entrez Gene 73991 Mouse</a> <a href="#">Entrez Gene 51062 Human</a> <a href="#">Q8WXF7</a>
Background:	The protein encoded by this gene is a GTPase and a Golgi body transmembrane protein. The encoded protein can form a homotetramer and has been shown to interact with spastin and with mitogen-activated protein kinase kinase kinase 4. This protein may be involved in axonal maintenance as evidenced by the fact that defects in this gene are a cause of spastic paraplegia type 3. Three transcript variants encoding two different isoforms have been found for this gene.
Synonyms:	AD-FSP; atlastin1; FSP1; GBP3; HSN1D; SPG3; SPG3A



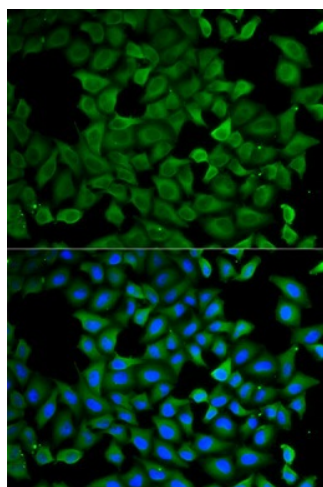
[View online »](#)

Protein Families: Druggable Genome, Transmembrane

### Product images:



Western blot analysis of extracts of various cell lines, using ATL1 antibody.



Immunofluorescence analysis of A549 cell using ATL1 antibody. Blue: DAPI for nuclear staining